



## COMPACT ANTENNA IS IDEAL FOR COVERT INSTALLATIONS

Laird Technologies' Internal GPS Antenna provides direction and location information in a compact housing. The antenna measures only 2.5" x 2.5" x .5", allowing covert installation into vehicle interiors.

Laird Technologies is a leading supplier of mobile antenna solutions for automotive, asset tracking, and consumer electronics industries. Products include cellular antennas (AMPS, GSM, PCS, UMTS), GPS antennas, entertainment antennas (AM/FM, DAB, DVB-T, HD-Radio, TV), mobile communication antennas (Bluetooth®, DSRC, RKE, TPMS, WiFi, WiMAX), satellite communication antennas, satellite radio antennas, battery packs, and consumer solutions.

Leveraging our experience in M2M wireless modules, Laird Technologies also designs smart antennas integrating functionalities such as cellular, WiFi and Bluetooth® modems, GPS receivers and vehicle networking. All of these capabilities can be further integrated into M2M Devices, that add control electronics and firmware to provide the latest evolution in telematics systems.

## FEATURES

- High gain antenna for excellent satellite reception
- Compact, ideally suited for stealth applications
- Built-in ground plane to allow mounting anywhere
- Can be combined with cellular Quad-Band antenna (part # 63702)

## BENEFITS

- Low total-cost implementation
- Easy installation
- Easy concealment
- Small package size
- Meets enhanced environmental specifications

## APPLICATIONS

- General automotive aftermarket
- Fleet logistics, tracking, and diagnostics
- Theft protection
- Vehicle and asset recovery
- Navigation systems
- Infotainment systems
- On-board computing

global solutions: local support™

Americas: +1 800 695.9810

Europe: +49 5121.2068.0

Asia: +86 21.5855.0827

## SPECIFICATIONS

Frequency Range (MHz)	1575.42 MHz
Element Gain	2.5 dBic @Zenith RHCP
VSWR	2:0:1
Output Impedance	50 ohms
LNA * Gain	30 dBi (typical)
LNA Noise Figure	1.5 dB Max (+23°C)
Output Band Rejection	-25 db Min. @ fo ± 50 MHz
Power Consumption	15 mA Max
Operating Voltage	3.0 V ± 0.3 V

## MECHANICAL SPECIFICATIONS

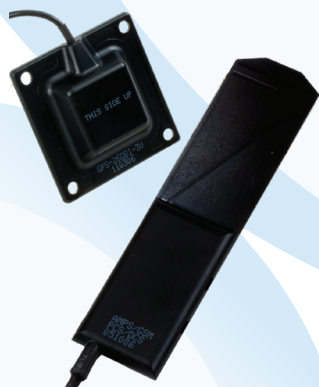
Dimensions (L x W x H)	63.5 x 63.5 x 13 mm
------------------------	---------------------

## ENVIRONMENTAL SPECIFICATIONS

Corrosion	5% NaCl for 96hrs
Operating Temperature	-40°C to +85°C
Thermal Shock	-40°C to +80°C 100 cycles
Humidity	65°C 95% RH non-condensing
Shock	1m drop on concrete 6 axes
Cable Pull	10 lbf linear pull

## ORDERING INFORMATION

MODEL #	REFERENCE #	DESCRIPTION	SELECTIONS
GPSIM15	62122	Internal GPS antenna	Specify cable type and length, connector type, housing, and mounting style.



**Order with MAF 90001 (Ref# 63702) for  
a combination GPS/Cellular solution**

WMT-DATA-INTERNAL-GPS 0309

Any information furnished by Laird Technologies and its agents is believed to be accurate and reliable. Responsibility for the use and application of Laird Technologies materials rests with the end user since Laird Technologies and its agents cannot be aware of all potential uses. Laird Technologies makes no warranties as to the fitness, merchantability, or suitability of any Laird Technologies materials or products for any specific or general uses. Laird Technologies shall not be liable for incidental or consequential damages of any kind. All Laird Technologies products are sold pursuant to the Laird Technologies terms and conditions of sale in effect from time to time, a copy of which will be furnished upon request. All Laird Technologies products are sold pursuant to the Laird Technologies domestic terms and conditions of sale in effect from time to time, a copy of which will be furnished upon request.

© 2009 All Rights Reserved  
Laird Technologies is a registered trademark of Laird Technologies, Inc.