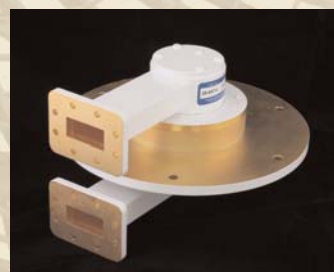


ROTARY JOINTS

Satellite Communications

*Field-proven
Worldwide
Reliability
for Land,
Sea and Air!*



'Since 1956'

Since 1956, Diamond Antenna and Microwave Corporation has been your independent company for rotary joints – a year before Sputnik was launched – and we've been making rotary joints for commercial and military satellite communication systems ever since. With this heritage and thousands of rotary joint designs to build from, including space-qualified designs, count on Diamond to provide your quality rotary joint optimized for land, sea, or air-based satellite systems.

If you don't see what you want in this catalog – let us know; we may already have it designed or we will modify a design to meet your requirements. In many cases the specifications in the catalog can be changed to include wider bandwidth, a shift of frequencies, higher power handling, better VSWR, or lower loss. Please ask if you don't see exactly what you need as only a small fraction of our SATCOM rotary joints are included in this catalog!

For a detailed outline drawing of a specific model number, or to request a quotation, please contact your local sales representative (see our website http://www.diamondantenna.com/sales_reps.htm) or send an email to sales@diamondantenna.com.



SATCOM ROTARY JOINTS



Model 12-2120-0

COAX - 1 Channel

Number of Channels	CH #	Frequency Low (GHz)	Frequency High (GHz)	Insertion Loss (dB)	IL WOW (dB)	VSWR (ratio)	VSWR WOW (dB)	Peak Power	Average Power	Input	Style
1	1	DC	12.4	0.35	0.05	1.30:1	0.03	10 KW	1 KW @ 1 GHz	N (M)	COAX



Model 18-2120-0

COAX - 1 Channel

Number of Channels	CH #	Frequency Low (GHz)	Frequency High (GHz)	Insertion Loss (dB)	IL WOW (dB)	VSWR (ratio)	VSWR WOW (dB)	Peak Power	Average Power	Input	Style
1	1	DC	18	0.4	0.05	1.40:1	0.03	10 KW	1 KW @ 1 GHz	N (M)	COAX



Model 41-2120-0

COAX - 1 Channel

Number of Channels	CH #	Frequency Low (GHz)	Frequency High (GHz)	Insertion Loss (dB)	IL WOW (dB)	VSWR (ratio)	VSWR WOW (dB)	Peak Power	Average Power	Input	Style
1	1	DC	4	0.2	*	1.20:1	0.02	*	0.001 W	N (F)	COAX

* Contact Diamond Antenna



SATCOM ROTARY JOINTS



Model 51-2120-0

COAX - 1 Channel

Number of Channels	CH #	Frequency Low (GHz)	Frequency High (GHz)	Insertion Loss (dB)	IL WOW (dB)	VSWR (ratio)	VSWR WOW (dB)	Peak Power	Average Power	Input	Style
1	1	8	18	0.4	0.05	1.40:1	0.03	*	10 W	N (F)	COAX



Model 18-2124-0

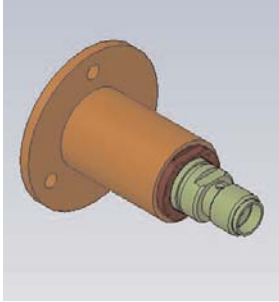
COAX - 1 Channel

Number of Channels	CH #	Frequency Low (GHz)	Frequency High (GHz)	Insertion Loss (dB)	IL WOW (dB)	VSWR (ratio)	VSWR WOW (dB)	Peak Power	Average Power	Input	Style
1	1	DC	18	0.3	0.05	1.50:1	0.05	5 KW	200 W @ 1 GHz	SMA (F)	COAX

* Contact Diamond Antenna



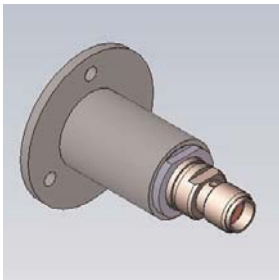
SATCOM ROTARY JOINTS



Model 20-2124-0

COAX - 1 Channel

Number of Channels	CH #	Frequency Low (GHz)	Frequency High (GHz)	Insertion Loss (dB)	IL WOW (dB)	VSWR (ratio)	VSWR WOW (dB)	Peak Power	Average Power	Input	Style
1	1	DC	20.2	0.5	0.1	1.50:1	0.05	5 KW	200 W	SMA (F)	COAX

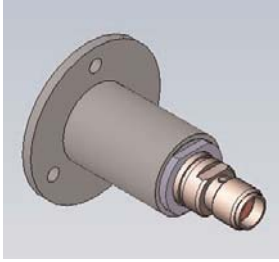


Model 26-2124-0

COAX - 1 Channel

Number of Channels	CH #	Frequency Low (GHz)	Frequency High (GHz)	Insertion Loss (dB)	IL WOW (dB)	VSWR (ratio)	VSWR WOW (dB)	Peak Power	Average Power	Input	Style
1	1	DC	18	.05	0.1	1.50:1	0.05	5 KW	200 W	SMA (F)	COAX
		18	26	0.75	0.15	1.75:1	0.07	5 KW	200 W		

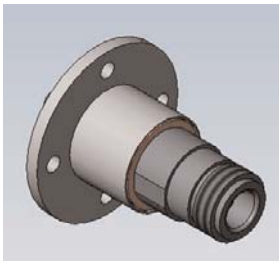
SATCOM ROTARY JOINTS



Model 47-2124-0

COAX - 1 Channel

Number of Channels	CH #	Frequency Low (GHz)	Frequency High (GHz)	Insertion Loss (dB)	IL WOW (dB)	VSWR (ratio)	VSWR WOW (dB)	Peak Power	Average Power	Input	Style
1	1	DC	12	0.5	0.05	1.40:1	0.05	500 W**	50 W**	K (F)	COAX
		DC	18	0.5	0.1	1.40:1	0.05	*	*		
		12	40	1	0.1	1.80:1	0.1	*	*		
		18	26.5	0.75	0.1	1.65:1	0.05	*	*		
								** @1GHz	** @1GHz		



Model 60-2124-0

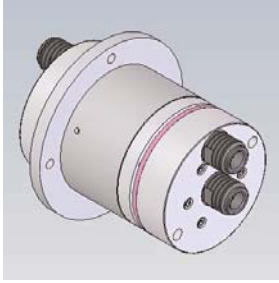
COAX - 1 Channel

Number of Channels	CH #	Frequency Low (GHz)	Frequency High (GHz)	Insertion Loss (dB)	IL WOW (dB)	VSWR (ratio)	VSWR WOW (dB)	Peak Power	Average Power	Input	Style
1	1	13.75	14.5	0.3	0.05	1.20:1	0.05	100 W	25 W	N (F)	COAX

* Contact Diamond Antenna



SATCOM ROTARY JOINTS



Model 2220C-0

COAX - 2 Channels

Number of Channels	CH #	Frequency Low (GHz)	Frequency High (GHz)	Insertion Loss (dB)	IL WOW (dB)	VSWR (ratio)	VSWR WOW (dB)	Peak Power	Average Power	Input	Style
2	1	DC	2.4	0.2	0.05	1.25:1	0.5	10 KW	200 W**	N (F)	COAX
		2.4	12	0.5	0.1	1.60:1	0.1	*	*		
	2	DC	2.4	0.2	0.1	1.25:1	0.5	10 KW	200 W**	N (F)	COAX
		2.4	3	0.5	0.2	2.50:1	0.1	10 KW	*		

**@ 1 GHz



Model 21-2220C-0

COAX - 2 Channels

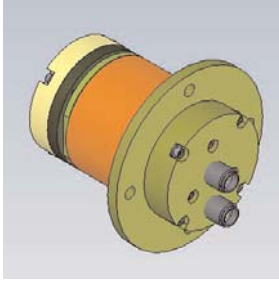
Number of Channels	CH #	Frequency Low (GHz)	Frequency High (GHz)	Insertion Loss (dB)	IL WOW (dB)	VSWR (ratio)	VSWR WOW (dB)	Peak Power	Average Power	Input	Style
2	1	DC	2.4	0.2	0.05	1.25:1	0.5	10 KW	200 W**	N (F)	COAX
		2.4	12	0.5	0.1	1.60:1	0.1	*	*		
	2	DC	2.4	0.2	0.1	1.25:1	0.5	10 KW	200 W**	N (F)	COAX
		2.4	3	0.5	0.2	2.50:1	0.1	*	*		

**@ 1 GHz

* Contact Diamond Antenna



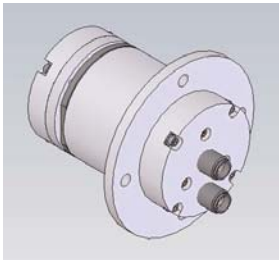
SATCOM ROTARY JOINTS



Model 2240-0

COAX - 2 Channels

Number of Channels	CH #	Frequency Low (GHz)	Frequency High (GHz)	Insertion Loss (dB)	IL WOW (dB)	VSWR (ratio)	VSWR WOW (dB)	Peak Power	Average Power	Input	Style
2	1	DC	8	0.4	0.05	1.35:1	0.05	2 KW	50 W	K (F)	COAX
		8	18	1	0.05	1.75:1	0.05	2 KW	50 W		
2	2	DC	4	0.75	0.1	2.00:1	0.1	2 KW	50 W	K (F)	COAX
		4	8	1.5	0.3	3.00:1	0.35	2 KW	50 W		
		8	12	2.5	0.5	3.50:1	0.8	2 KW	50 W		
		12	18	3	0.5	4.50:1	2	2 KW	50 W		



Model 20-2240-0

COAX - 2 Channels

Number of Channels	CH #	Frequency Low (GHz)	Frequency High (GHz)	Insertion Loss (dB)	IL WOW (dB)	VSWR (ratio)	VSWR WOW (dB)	Peak Power	Average Power	Input	Style
2	1	2	8	0.4	0.05	1.35:1	0.05	2 KW	50 W	K (F)	COAX
		8	18	1	0.05	1.75:1	0.05	2 KW	50 W		
2	2	2	4	0.75	0.1	2.00:1	0.1	2 KW	50 W	K (F)	COAX
		4	8	1.5	0.3	3.00:1	0.35	2 KW	50 W		
		8	10	2.5	0.5	3.50:1	0.6	2 KW	50 W		

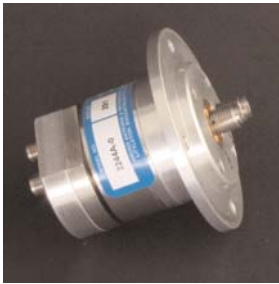


SATCOM ROTARY JOINTS

Model 25-2240-0

COAX - 2 Channels

Number of Channels	CH #	Frequency Low (GHz)	Frequency High (GHz)	Insertion Loss (dB)	IL WOW (dB)	VSWR (ratio)	VSWR WOW (dB)	Peak Power	Average Power	Input	Style
2	1	DC	18	0.75	*	1.50:1	*	300 W	30 W	K (F)	COAX
		18	26.5	1	*	2.00:1	*	300 W	30 W		
2	2	2	2	0.5	*	1.75:1	*	500 W	10 W	K (F)	COAX
		4	4	0.75	*	2.0:1	*	500 W	10 W		
		8	8	1.5	*	3.0:1	*	500 W	10 W		
		12.4	12.4	2.5	*	3.50:1	*	500 W	10 W		
		18	18	3	*	4.50:1	*	500 W	10 W		



Model 2244A-0

COAX - 2 Channels

Number of Channels	CH #	Frequency Low (GHz)	Frequency High (GHz)	Insertion Loss (dB)	IL WOW (dB)	VSWR (ratio)	VSWR WOW (dB)	Peak Power	Average Power	Input	Style
2	1	DC	18	1.5	0.05	1.80:1	0.05	5 KW	200 W**	SMA (F)	COAX
		DC	2	0.4	0.1	1.35:1	0.1	5 KW	200 W**		
		2	4	1	0.2	2.00:1	0.2	*	*		
									**@ 1 GHz		

* Contact Diamond Antenna



SATCOM ROTARY JOINTS



Model 23-2244A-0

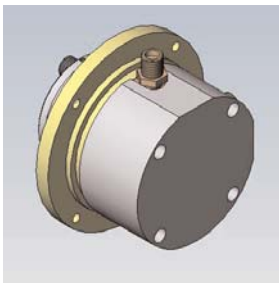
COAX - 2 Channels

Number of Channels	CH #	Frequency Low (GHz)	Frequency High (GHz)	Insertion Loss (dB)	IL WOW (dB)	VSWR (ratio)	VSWR WOW (dB)	Peak Power	Average Power	Input	Style
2	1	DC	4.5	0.5	0.05	1.50:1	0.05	*	5 W	SMA (F)	COAX
	2	DC	4.5	1	0.25	2.00:1	0.25	*	5 W	SMA (F)	COAX

Model 47-2255-0

COAX - 2 Channels

Number of Channels	CH #	Frequency Low (GHz)	Frequency High (GHz)	Insertion Loss (dB)	IL WOW (dB)	VSWR (ratio)	VSWR WOW (dB)	Peak Power	Average Power	Input	Style
2	1	7.9	8.4	0.4	0.05	1.25:1	1.05:1	*	400 W	TNC (F)	COAX
	2	7.25	7.75	0.4	0.05	1.25:1	1.05:1	*	1 W	TNC (F)	COAX



Model 51-2255-0

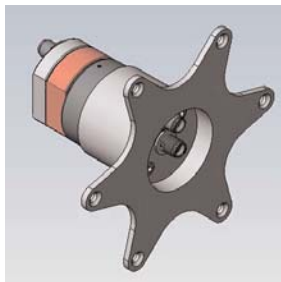
COAX - 2 Channels

Number of Channels	CH #	Frequency Low (GHz)	Frequency High (GHz)	Insertion Loss (dB)	IL WOW (dB)	VSWR (ratio)	VSWR WOW (dB)	Peak Power	Average Power	Input	Style
2	1	10.7	12.75	0.75	*	1.40:1	*	*	10 W	SMA (F)	COAX
	2	13.75	14.5	0.75	*	1.40:1	*	*	10 W	SMA (F)	COAX

* Contact Diamond Antenna



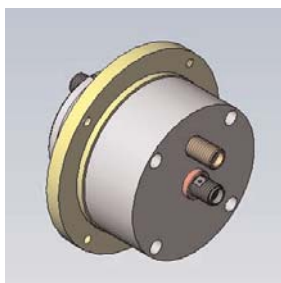
SATCOM ROTARY JOINTS



Model 60-2255-0

COAX - 2 Channels

Number of Channels	CH #	Frequency Low (GHz)	Frequency High (GHz)	Insertion Loss (dB)	IL WOW (dB)	VSWR (ratio)	VSWR WOW (dB)	Peak Power	Average Power	Input	Style
2	1	7.9	8.4	0.5	0.1	1.50:1	0.05	*	1 W	SMA (F)	COAX
	2	7.25	7.75	0.75	0.1	1.50:1	0.1	*	1 W	SMA (F)	COAX



Model 61-2255-0

COAX - 2 Channels

Number of Channels	CH #	Frequency Low (GHz)	Frequency High (GHz)	Insertion Loss (dB)	IL WOW (dB)	VSWR (ratio)	VSWR WOW (dB)	Peak Power	Average Power	Input	Style
2	1	13.75	14.5	0.3	*	1.30:1	*	*	20 W	SMA (F)	COAX
	2	10.95	12.75	0.5	*	1.35:1	*	*	10 W	SMA (F)	COAX

Model 19-346-0

Waveguide - 1 Channel

Number of Channels	CH #	Frequency Low (GHz)	Frequency High (GHz)	Insertion Loss (dB)	IL WOW (dB)	VSWR (ratio)	VSWR WOW (dB)	Peak Power	Average Power	Input	Style
1	1	2.025	2.11	0.15	0.03	1.20:1	0.05	2 KW CW	2 KW	WR 430	L

* Contact Diamond Antenna



SATCOM ROTARY JOINTS

Model 21-346-0

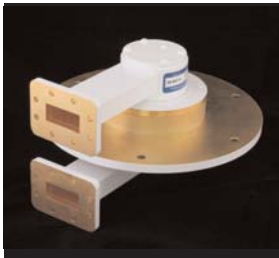
Waveguide - 1 Channel

Number of Channels	CH #	Frequency Low (GHz)	Frequency High (GHz)	Insertion Loss (dB)	IL WOW (dB)	VSWR (ratio)	VSWR WOW (dB)	Peak Power	Average Power	Input	Style
1	1	1.76	1.84	0.2	0.01	1.30:1	0.03	6.5 KW CW	6.5 W	WR 430	U
		2.025	2.12	0.2	0.01	1.30:1	0.03	6.5 KW CW	6.5 W		

Model 30-645-0

Waveguide - 1 Channel

Number of Channels	CH #	Frequency Low (GHz)	Frequency High (GHz)	Insertion Loss (dB)	IL WOW (dB)	VSWR (ratio)	VSWR WOW (dB)	Peak Power	Average Power	Input	Style
1	1	5.85	6.425	0.2	0.05	1.20:1	0.05	400 W CW	400 W	WR 137	I

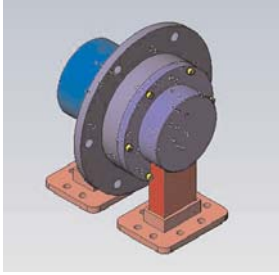


Model 25-647-0

Waveguide - 1 Channel

Number of Channels	CH #	Frequency Low (GHz)	Frequency High (GHz)	Insertion Loss (dB)	IL WOW (dB)	VSWR (ratio)	VSWR WOW (dB)	Peak Power	Average Power	Input	Style
1	1	7.9	8.4	0.1 Typ	0.02	1.15:1	0.05	6.5 MW	15 KW	WR 137	U

SATCOM ROTARY JOINTS



Model 39-647-0

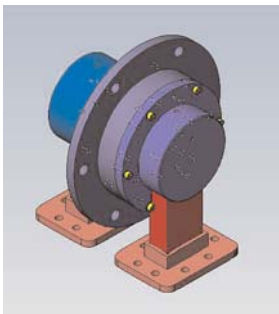
Waveguide - 1 Channel

Number of Channels	CH #	Frequency Low (GHz)	Frequency High (GHz)	Insertion Loss (dB)	IL WOW (dB)	VSWR (ratio)	VSWR WOW (dB)	Peak Power	Average Power	Input	Style
1	1	5.825	6.425	0.1	0.05	1.15:1	*	*	15 KW	WR 159	U

Model 42-647-0

Waveguide - 1 Channel

Number of Channels	CH #	Frequency Low (GHz)	Frequency High (GHz)	Insertion Loss (dB)	IL WOW (dB)	VSWR (ratio)	VSWR WOW (dB)	Peak Power	Average Power	Input	Style
1	1	7.9	8.4	0.1	0.02	1.15:1	0.05	6.5 MW	15 KW	WR 137	U



Model 43-647-0

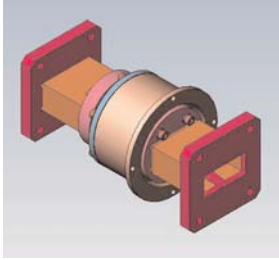
Waveguide - 1 Channel

Number of Channels	CH #	Frequency Low (GHz)	Frequency High (GHz)	Insertion Loss (dB)	IL WOW (dB)	VSWR (ratio)	VSWR WOW (dB)	Peak Power	Average Power	Input	Style
1	1	5.825	6.425	0.1	0.05	1.12:1	*	15 KW CW	15 KW	WR 159	U

* Contact Diamond Antenna



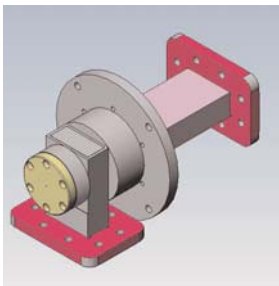
SATCOM ROTARY JOINTS



Model 31-745-0

Waveguide - 1 Channel

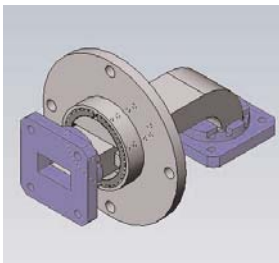
Number of Channels	CH #	Frequency Low (GHz)	Frequency High (GHz)	Insertion Loss (dB)	IL WOW (dB)	VSWR (ratio)	VSWR WOW (dB)	Peak Power	Average Power	Input	Style
1	1	7.9	8.4	0.15	0.05	1.15:1	0.03	200 W CW	200 W	WR 112	I



Model 43-746-0

Waveguide - 1 Channel

Number of Channels	CH #	Frequency Low (GHz)	Frequency High (GHz)	Insertion Loss (dB)	IL WOW (dB)	VSWR (ratio)	VSWR WOW (dB)	Peak Power	Average Power	Input	Style
1	1	7.9	8.4	0.15	*	1.20:1	1.03	250 KW	1.2 KW	WR 112	L



Model 46-845-0

Waveguide - 1 Channel

Number of Channels	CH #	Frequency Low (GHz)	Frequency High (GHz)	Insertion Loss (dB)	IL WOW (dB)	VSWR (ratio)	VSWR WOW (dB)	Peak Power	Average Power	Input	Style
1	1	13.75	14.5	0.17	0.05	1.20:1	0.05	500 W CW	500 W	WR 75	I TO L

* Contact Diamond Antenna



SATCOM ROTARY JOINTS



Model 47-845-0

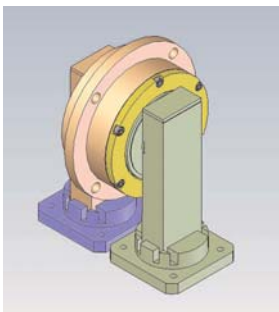
Waveguide - 1 Channel

Number of Channels	CH #	Frequency Low (GHz)	Frequency High (GHz)	Insertion Loss (dB)	IL WOW (dB)	VSWR (ratio)	VSWR WOW (dB)	Peak Power	Average Power	Input	Style
1	1	10.7	12.75	0.5	*	1.40:1	*	500 W CW	500 W	WR 75	I TO L
		13.75	14.5	0.3	*	1.20:1	*	500 W CW	500 W		

Model 44-846-0

Waveguide - 1 Channel

Number of Channels	CH #	Frequency Low (GHz)	Frequency High (GHz)	Insertion Loss (dB)	IL WOW (dB)	VSWR (ratio)	VSWR WOW (dB)	Peak Power	Average Power	Input	Style
1	1	11.2	14.5	0.3	0.1	1.25:1	1.1	50 W	5 W	WR 75	U



Model 20-847-0

Waveguide - 1 Channel

Number of Channels	CH #	Frequency Low (GHz)	Frequency High (GHz)	Insertion Loss (dB)	IL WOW (dB)	VSWR (ratio)	VSWR WOW (dB)	Peak Power	Average Power	Input	Style
1	1	13.75	14.5	0.15	0.05	1.20:1	0.05	1 KW CW	1 KW	WR 75	U

* Contact Diamond Antenna



SATCOM ROTARY JOINTS



Model 25-847-0

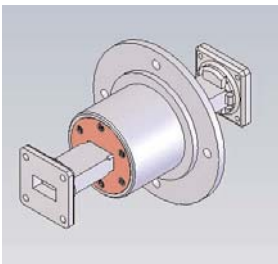
Waveguide - 1 Channel

Number of Channels	CH #	Frequency Low (GHz)	Frequency High (GHz)	Insertion Loss (dB)	IL WOW (dB)	VSWR (ratio)	VSWR WOW (dB)	Peak Power	Average Power	Input	Style
1	1	14	14.5	0.17	0.05	1.20:1	0.05	1 KW CW	1 KW	WR 75	U TO L

Model 38-847-0

Waveguide - 1 Channel

Number of Channels	CH #	Frequency Low (GHz)	Frequency High (GHz)	Insertion Loss (dB)	IL WOW (dB)	VSWR (ratio)	VSWR WOW (dB)	Peak Power	Average Power	Input	Style
1	1	13.75	14.5	0.15	0.05	1.20:1	0.05	8.5 KW CW	8.5 KW	WR 75	U



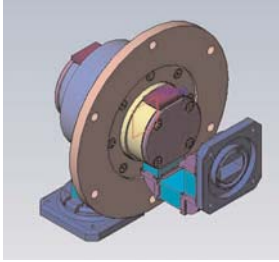
Model 44-945-0

Waveguide - 1 Channel

Number of Channels	CH #	Frequency Low (GHz)	Frequency High (GHz)	Insertion Loss (dB)	IL WOW (dB)	VSWR (ratio)	VSWR WOW (dB)	Peak Power	Average Power	Input	Style
1	1	17.3	18.4	0.5	0.02	1.15:1	0.03	10 KW	750 W	WR 62	I



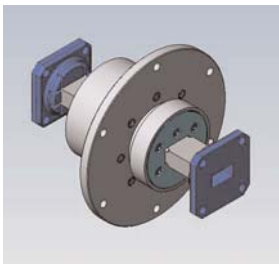
SATCOM ROTARY JOINTS



Model 10-1000-0

Waveguide - 1 Channel

Number of Channels	CH #	Frequency Low (GHz)	Frequency High (GHz)	Insertion Loss (dB)	IL WOW (dB)	VSWR (ratio)	VSWR WOW (dB)	Peak Power	Average Power	Input	Style
1	1	20.2	21.2	0.15	0.05	1.15:1	*	1400 W CW	1400 W	WR 51	U TO L



Model 11-1000-0

Waveguide - 1 Channel

Number of Channels	CH #	Frequency Low (GHz)	Frequency High (GHz)	Insertion Loss (dB)	IL WOW (dB)	VSWR (ratio)	VSWR WOW (dB)	Peak Power	Average Power	Input	Style
1	1	17.3	21.3	0.5	0.05	1.50:1	0.05	75 W Typ	*	WR 51	I

Model 1100-0

Waveguide - 1 Channel

Number of Channels	CH #	Frequency Low (GHz)	Frequency High (GHz)	Insertion Loss (dB)	IL WOW (dB)	VSWR (ratio)	VSWR WOW (dB)	Peak Power	Average Power	Input	Style
1	1	30	31	0.25	0.05	1.20:1	1.05:1	600 W CW	600 W	WR 34	U

* Contact Diamond Antenna



SATCOM ROTARY JOINTS

Model 10-1100-0

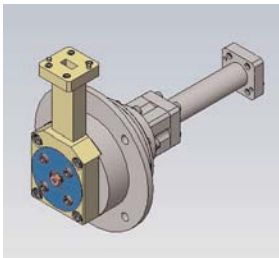
Waveguide - 1 Channel

Number of Channels	CH #	Frequency Low (GHz)	Frequency High (GHz)	Insertion Loss (dB)	IL WOW (dB)	VSWR (ratio)	VSWR WOW (dB)	Peak Power	Average Power	Input	Style
1	1	29	30	0.3	0.05	1.25:1	1.05:1	800 W CW	800 W	WR 34	U

Model 23-1245-0

Waveguide - 1 Channel

Number of Channels	CH #	Frequency Low (GHz)	Frequency High (GHz)	Insertion Loss (dB)	IL WOW (dB)	VSWR (ratio)	VSWR WOW (dB)	Peak Power	Average Power	Input	Style
1	1	41.4	45	1	0.2	1.50:1	*	50 W CW	50 W	WR 22	I



Model 10-1247-0

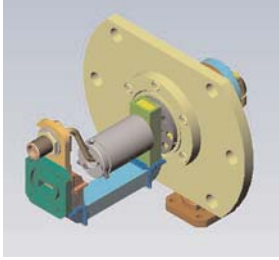
Waveguide - 1 Channel

Number of Channels	CH #	Frequency Low (GHz)	Frequency High (GHz)	Insertion Loss (dB)	IL WOW (dB)	VSWR (ratio)	VSWR WOW (dB)	Peak Power	Average Power	Input	Style
1	1	43.5	45.5	1	0.03	1.40:1	0.03	200 W	120 W	WR 22	L

* Contact Diamond Antenna



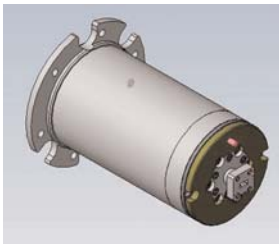
SATCOM ROTARY JOINTS



Model 22107-0

Waveguide - 2 Channels

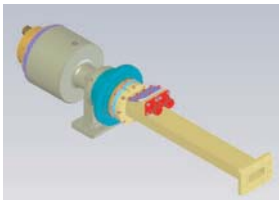
Number of Channels	CH #	Frequency Low (GHz)	Frequency High (GHz)	Insertion Loss (dB)	IL WOW (dB)	VSWR (ratio)	VSWR WOW (dB)	Peak Power	Average Power	Input	Style
2	1	30	31	0.5	0.1	1.50:1	0.1	*	40 W	WR 28	U TO L
	2	20.1	21.2	2	0.7	2.00:1	0.5	*	Receive	SMA (F)	COAX



Model 22116-0

Waveguide - 2 Channels

Number of Channels	CH #	Frequency Low (GHz)	Frequency High (GHz)	Insertion Loss (dB)	IL WOW (dB)	VSWR (ratio)	VSWR WOW (dB)	Peak Power	Average Power	Input	Style
2	1	43.5	45.5	0.7	0.2	1.40:1	0.1	200 W	120 W	WR 22	I
	2	20.2	21.2	1	0.2	1.50:1	0.1	1 W	1 W	SMA (F)	COAX



Model 2363-0

Waveguide - 3 Channels

Number of Channels	CH #	Frequency Low (GHz)	Frequency High (GHz)	Insertion Loss (dB)	IL WOW (dB)	VSWR (ratio)	VSWR WOW (dB)	Peak Power	Average Power	Input	Style
3	1	5.85	6.425	0.2	0.05	1.25:1	0.05	*	160 W	WR 137	L
		7.9	8.4	0.2	0.05	1.25:1	0.05	*	160 W		
3	2	DC	5	0.6	0.05	1.30:1	0.05	*	1W	N (F)	COAX
	3	DC	20	0.6	0.1	1.40:1	0.1	*	1W	N (F)	COAX

* Contact Diamond Antenna





'Since 1956'

DIAMOND ANTENNA & MICROWAVE CORPORATION

59 Porter Road • Littleton, MA 01460 USA

Tel: +1.978.486.0039 • Fax: +1.978.486.0079

sales@diamondantenna.com

www.diamondantenna.com