



# WBA0530A

## 0.5 – 2.8 GHz LOW NOISE WIDE BAND AMPLIFIER

REV A  
May 2010

### Key Features



### Product Description

### Applications

- 0.5 ~ 2.8 GHz
- 0.80 dB Noise Figure
- 36.0 dBm Output IP<sub>3</sub>
- 28.0 dB Gain
- 20.0 dBm P<sub>1dB</sub>
- +/-0.30 dB Gain Flatness
- 1.4:1 VSWR
- Single power supply
- >34 years MTBF
- Unconditional stable
- RoHS compliant
- Meet MIL-STD-202

WBA0530A integrates WanTcom proprietary power amplifier technology, high frequency micro electronic assembly techniques, and high reliability design to realize optimum low noise figure, wideband, high linearity, and unconditional stable performances together. With single +5.0V DC operation, the amplifier has optimal input and output matching in the specified frequency range at 50-Ohm impedance system. The amplifier has standard SMA connectorized WP-11 gold plated housing.

- Wide Band PA Driver
- Defense
- Test Equipment
- Measurement
- Fixed Wireless

### Specifications

Summary of the electrical specifications WBA0530A at room temperature

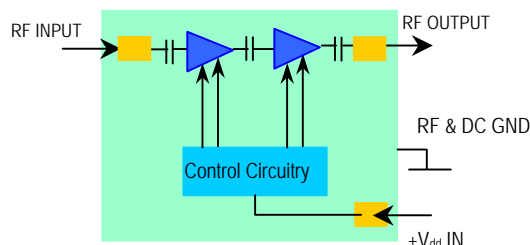
Index	Testing Item	Symbol	Test Constraints	Min	Nom	Max	Unit
1	Gain	S <sub>21</sub>	0.5 – 2.8 GHz	26	28	30	dB
2	Gain Variation	ΔG	0.5 – 2.8 GHz		+/- 0.3	+/-0.6	dB
3	Input VSWR	SWR <sub>1</sub>	0.5 – 2.8 GHz		1.45:1	1.6:1	Ratio
4	Output VSWR	SWR <sub>2</sub>	0.5 – 2.8 GHz		1.25:1	1.5:1	Ratio
5	Reverse Isolation	S <sub>12</sub>	0.5 – 2.8 GHz		40		dB
7	Output Power 1dB compression Point	P <sub>1dB</sub>	0.5 – 2.8 GHz	18	20		dBm
9	Current Consumption	I <sub>dd</sub>	V <sub>dd</sub> = +5 V		160		mA
10	Power Supply Voltage	V <sub>dd</sub>		4.5	+5	+5.5	V
11	Thermal Resistance	R <sub>th,c</sub>	Junction to case			30	°C/W
12	Operating Temperature	T <sub>o</sub>		-40		+85	°C
13	Maximum Average RF Input Power	P <sub>IN, MAX</sub>	DC – 6 GHz			10	dBm

### Absolute Maximum Ratings

Parameters	Units	Ratings
DC Power Supply Voltage	V	6
Drain Current	mA	200
Total Power Dissipation	W	1
RF Input Power	dBm	10
Channel Temperature	°C	150
Storage Temperature	°C	-55 ~ 125
Operating Temperature	°C	-40 ~ 85
Thermal Resistance	°C/W	30

Operation of this device above any one of these parameters may cause permanent damage.

### Functional Block Diagram

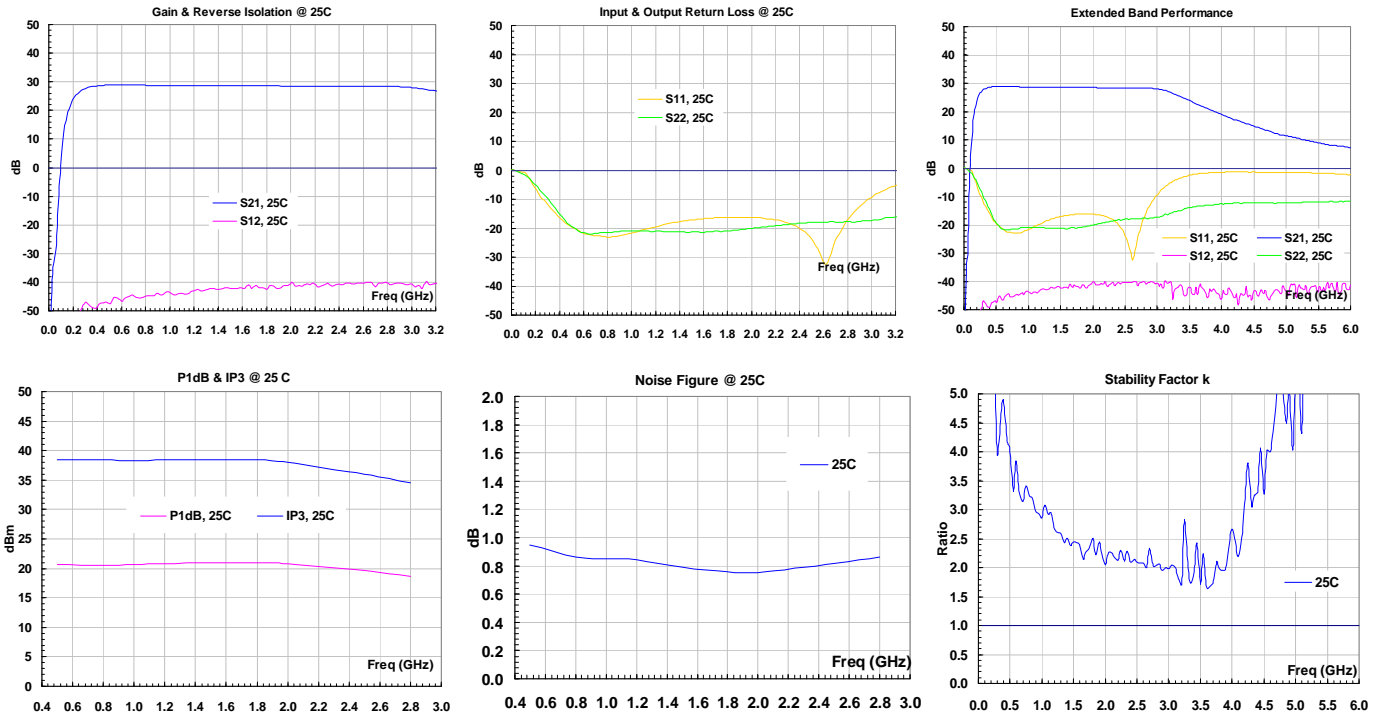


### Ordering Information

Model Number	WBA0530A
--------------	----------

Specifications and information are subject to change without notice.

WanTcom, Inc \* Phone 01 952 746 6088 \* FAX: 01 952 746 8818 \* e-mail: sales@wantcominc.com \* Web site: [www.wantcominc.com](http://www.wantcominc.com)

**WBA0530A****0.5 – 2.8 GHz LOW NOISE WIDE BAND AMPLIFIER****REV A**  
**May 2010****Typical Data:****Outline, WP-11 Housing**

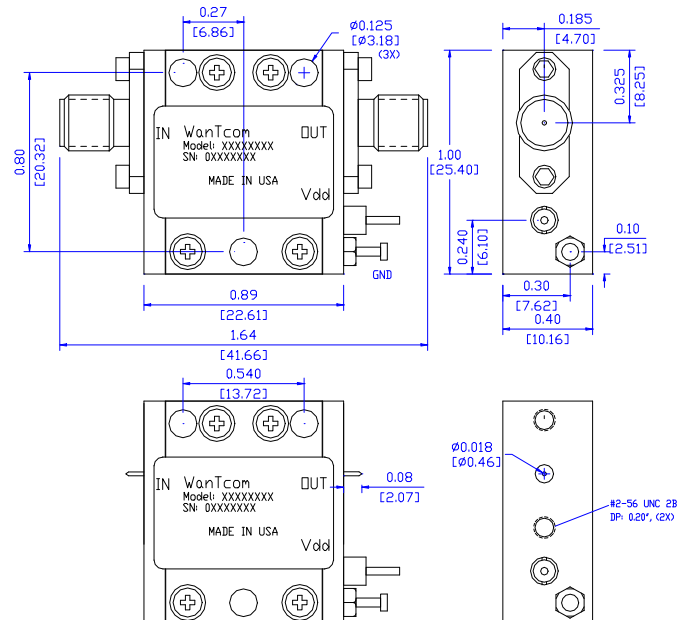
UNITS: INCH  
[mm]

BODY: Brass

Finish: Gold Plating

RF Connector: SMA F Gold Field Replaceable

V<sub>dd</sub> PWR:



Specifications and information are subject to change without notice.

WanTcom, Inc \* Phone 01 952 746 6088 \* FAX: 01 952 746 8818 \* e-mail: sales@wantcominc.com \* Web site: [www.wantcominc.com](http://www.wantcominc.com)



## **Application Notes:**

### **A. SMA Torque Wrench Selection**

Always use a torque wrench with 5 ~ 6 inch-lb coupling torque setting for mating the SMA cables to the amplifier. Never use torque more than 8 inch-lb wrench for tightening the mating cable to the connector. Otherwise, the permanent damage will occur to the SMA connectors of the amplifier. 8710-1582 (5 inch-lb) is one of the ideal torque wrench choice from Agilent Technology.

### **B. DC Power Line Connection**

Strip the insulation layer at the end of DC power supply wire. The stripped distance should be in the range of 0.100" to 0.200". The 24 ~ 26 American Wire Gauge wire is suitable. Wound the stripped terminal wire about 1 to 2 turns on the DC feed thru center pin. Solder the wounded wire and the center pin together. Clean the soldering area by Q-tip with alcohol to remove the flux and residue.

Repeat the process to solder the DC return wire on the ground turret.

### **C. Mounting the Amplifier**

Use three pieces of #4-40 with longer than 9/16" screws for mounting the amplifier on a metal-based chase. Flat and spring washers are needed to prevent the screw loosening during the shock and vibration. Always use the appropriate torque setting of the power screwdriver to mount them.

\*\*\*\*\*