



# WBPA2735A

## 2.7- 3.3 GHz 1.6W POWER AMPLIFIER

REV B  
January 2010

### Key Features



- 2.7 ~ 3.4 GHz
- 33.0 dBm output  $P_{sat}$
- 32.0 dBm Output  $P_{1dB}$
- 24.0 dB Gain
- +/-0.50 dB Gain Flatness
- 1.5:1 VSWR
- Single power supply
- >34 years MTBF
- Unconditional stable
- RoHS compliant
- Meet MIL-STD-202

### Product Description

WBPA2735A integrates WanTcom proprietary power amplifier technology, high frequency micro electronic assembly techniques, and high reliability design to realize optimum low noise figure, wideband, high linearity, and unconditional stable performances together. With single +10.0V DC operation, the amplifier has optimal input and output matching in the specified frequency range at 50-Ohm impedance system. The amplifier has standard SMA connectorized WP-11 gold plated housing.

### Applications

- Mobile Infrastructures
- Defense
- Radar
- Measurement
- Fixed Wireless

# Preliminary

### Specifications

Summary of the electrical specifications WBPA2735A at room temperature

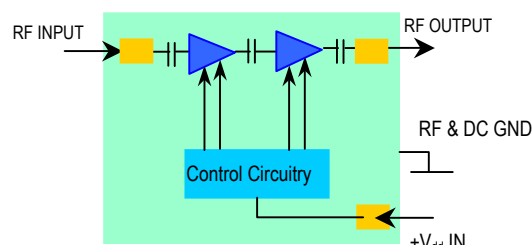
Index	Testing Item	Symbol	Test Constraints	Min	Nom	Max	Unit
1	Gain	$S_{21}$	2.7 ~ 3.4 GHz	22	24	26	dB
2	Gain Variation	$\Delta G$	2.7 ~ 3.4 GHz		+/- 0.5	+/-0.75	dB
3	Input VSWR	$SWR_1$	2.7 ~ 3.4 GHz		1.5:1	1.8:1	Ratio
4	Output VSWR	$SWR_2$	2.7 ~ 3.4 GHz		1.5:1	1.8:1	Ratio
5	Reverse Isolation	$S_{12}$	2.7 ~ 3.4 GHz	35	40		dB
7	Output Power 1dB compression Point	$P_{sat}$	2.7 ~ 3.4 GHz	31	33		dBm
9	Current Consumption	$I_{dd}$	$V_{dd} = +10V$		500		mA
10	Power Supply Voltage	$V_{dd}$	WBPA2735A	9.5	+10	+10.5	V
11	Thermal Resistance	$R_{th,c}$	Junction to case			15	°C/W
12	Operating Temperature	$T_o$		-40		+85	°C
13	Maximum Average RF Input Power	$P_{IN, MAX}$	DC ~ 6 GHz			20	dBm

### Absolute Maximum Ratings

Parameters	Units	Ratings
DC Power Supply Voltage	V	12
Drain Current	mA	600
Total Power Dissipation	W	7
RF Input Power	dBm	20
Channel Temperature	°C	150
Storage Temperature	°C	-55 ~ 125
Operating Temperature	°C	-40 ~ 85
Thermal Resistance	°C/W	12

Operation of this device above any one of these parameters may cause permanent damage.

### Functional Block Diagram



### Ordering Information

Model Number	WBPA2735A
--------------	-----------

Specifications and information are subject to change without notice.

WanTcom, Inc \* Phone 01 952 746 6088 \* FAX: 01 952 746 8818 \* e-mail: sales@wantcominc.com \* Web site: [www.wantcominc.com](http://www.wantcominc.com)

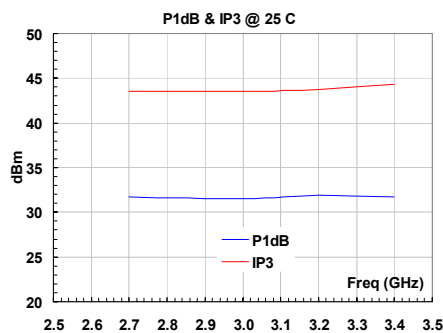
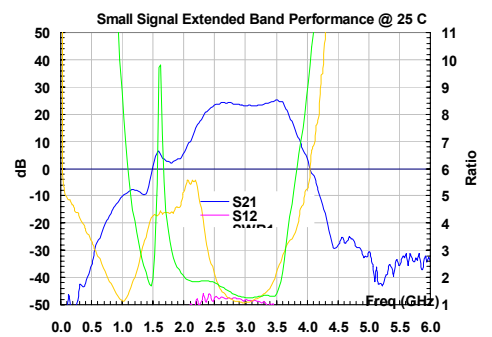
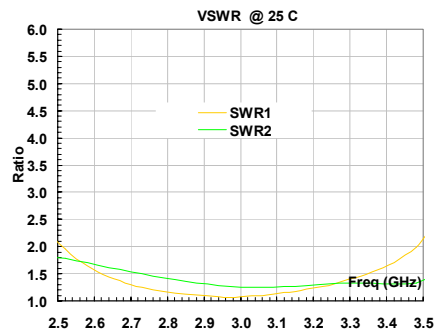
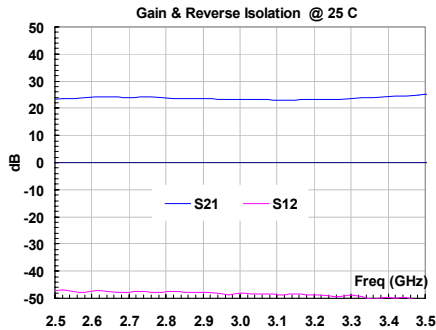


# WBPA2735A

## 2.7- 3.3 GHz 1.6W POWER AMPLIFIER

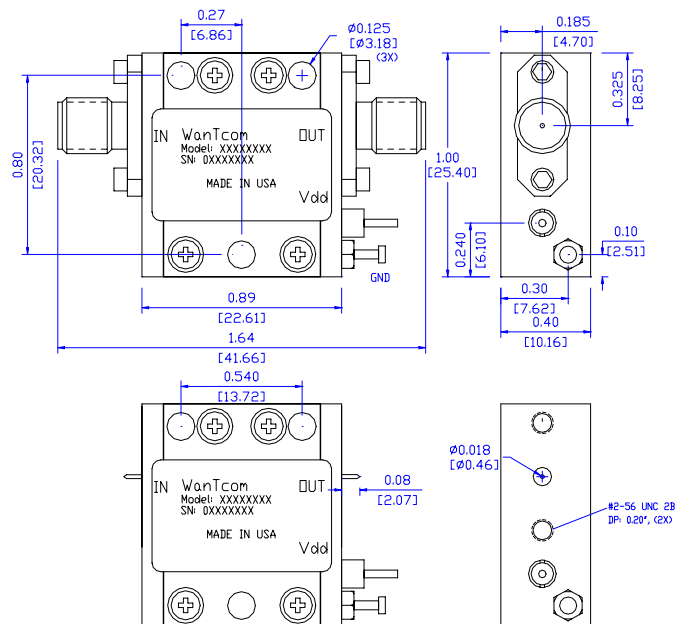
REV B  
January 2010

### Typical Data:



### Outline, WP-11 Housing

UNITS: INCH  
[mm]  
BODY: Brass  
Finish: Gold Plating  
RF Connector: SMA F Gold Field  
Replaceable  
V<sub>dd</sub> PWR: Feed through



Specifications and information are subject to change without notice.

WanTcom, Inc \* Phone 01 952 746 6088 \* FAX: 01 952 746 8818 \* e-mail: sales@wantcominc.com \* Web site: [www.wantcominc.com](http://www.wantcominc.com)



## **Application Notes:**

### **A. SMA Torque Wrench Selection**

Always use a torque wrench with 5 ~ 6 inch-lb coupling torque setting for mating the SMA cables to the amplifier. Never use torque more than 8 inch-lb wrench for tightening the mating cable to the connector. Otherwise, the permanent damage will occur to the SMA connectors of the amplifier. 8710-1582 (5 inch-lb) is one of the ideal torque wrench choice from Agilent Technology.

### **B. DC Power Line Connection**

Strip the insulation layer at the end of DC power supply wire. The stripped distance should be in the range of 0.100" to 0.200". The 24 ~ 26 American Wire Gauge wire is suitable. Wound the stripped terminal wire about 1 to 2 turns on the DC feed thru center pin. Solder the wounded wire and the center pin together. Clean the soldering area by Q-tip with alcohol to remove the flux and residue.

Repeat the process to solder the DC return wire on the ground turret.

### **C. Mounting the Amplifier**

Use three pieces of #4-40 with longer than 9/16" screws for mounting the amplifier on a metal-based chase. Flat and spring washers are needed to prevent the screw loosening during the shock and vibration. Always use the appropriate torque setting of the power screwdriver to mount them.

\*\*\*\*\*