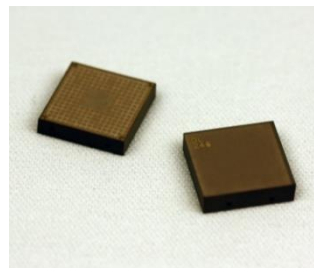


## DL246A

The DL246A is a cost effective and compact integrated delay line. Using Cu-LTCC Technology, the DL246A was designed to optimize the performance of the Scintera family of RF Adaptive Linearization Integrated Circuits. The versatile design integrates 2 delay lines, the first a nominal 2nS delay and the second a nominal 4nS. These 2 circuits can be combined for an overall delay of 6nS.



### Key Features:

- Versatile design yields 3 separate nominal delay paths (2nS, 4nS & 6nS)
- Compact - 12mm x 12mm
- Surface Mount
- Optimized to work with the RFPAL family of products from Scintera
- Characterized over the operating frequency 500MHz to 3000MHz
- RoHS Compliant
- Part #DL246ATR comes packaged on 7" Tape & Reel

### Absolute Maximum Ratings:

Parameters	Symbol	Value	Units
Storage Temperature	Tstg	-65 to 150	°C
Maximum Operating Temperature	Tmax	-40 to 85	°C

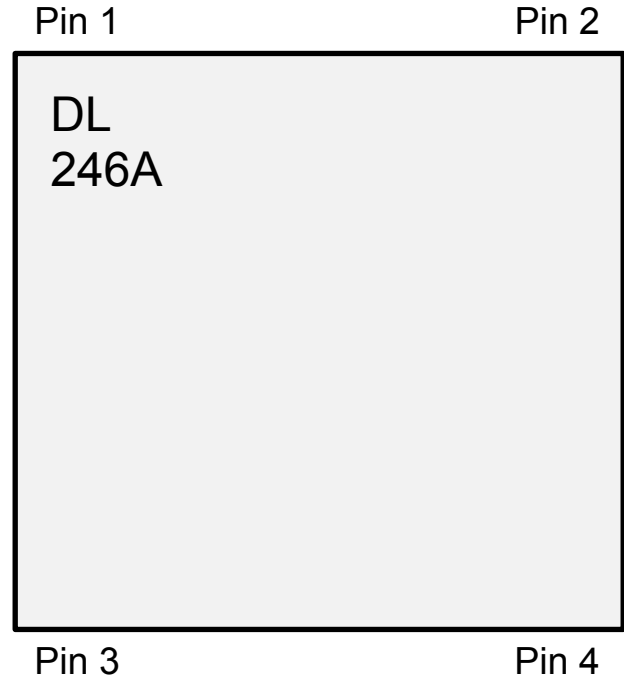
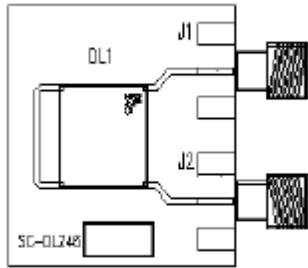
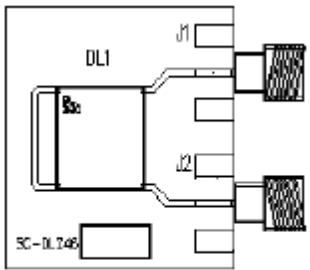
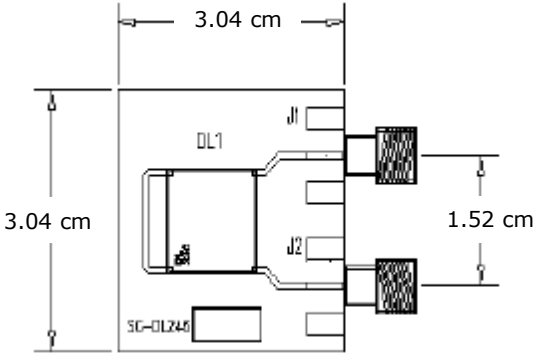
### Electrical Specifications: (at room temperature)

Testing Item	Test Constraints	Min	Nom	Max	Unit
Delay	Pin 3 to Pin 4; 500 MHz to 3000 MHz	1.6	2.0	2.6	nS
Insertion Loss	Pin 3 to Pin 4; 700 MHz		1.3	1.6	dB
Insertion Loss	Pin 3 to Pin 4; 2800 MHz		2.3	2.6	dB
Return Loss	Pin 3 to Pin 4; 500 MHz to 3000 MHz	-9			dB
Delay	Pin 1 to Pin 2; 500 MHz to 3000 MHz	3.3	4.0	4.6	nS
Insertion Loss	Pin 1 to Pin 2; 700 MHz		2.4	2.6	dB
Insertion Loss	Pin 1 to Pin 2; 2700 MHz		4.3	4.5	dB
Return Loss	Pin 1 to Pin 2; 500 MHz to 3000 MHz	-9			dB
Delay	Pin 2 to Pin 4; 500 MHz to 3000 MHz	4.0	6.0	7.2	nS
Insertion Loss	Pin 2 to Pin 4; 700 MHz		3.8	4.2	dB
Insertion Loss	Pin 2 to Pin 4; 2800 MHz		6.8	7.0	dB
Return Loss	Pin 2 to Pin 4; 500 MHz to 3000 MHz	-9			dB

Available exclusively from Richardson RFPD - 800-737-6937 (U.S. & Canada) - 630-262-6800 (International)  
 Or visit [www.richardsonrfpd.com](http://www.richardsonrfpd.com). See important product notice on last page of this document.

Internal Richardson Document #	Origination Date: March 2, 2015	Rev: V0 Date: March, 2015	Page 1/4
--------------------------------	------------------------------------	------------------------------	----------

**Mounting Orientations:** (note pin 1 location)

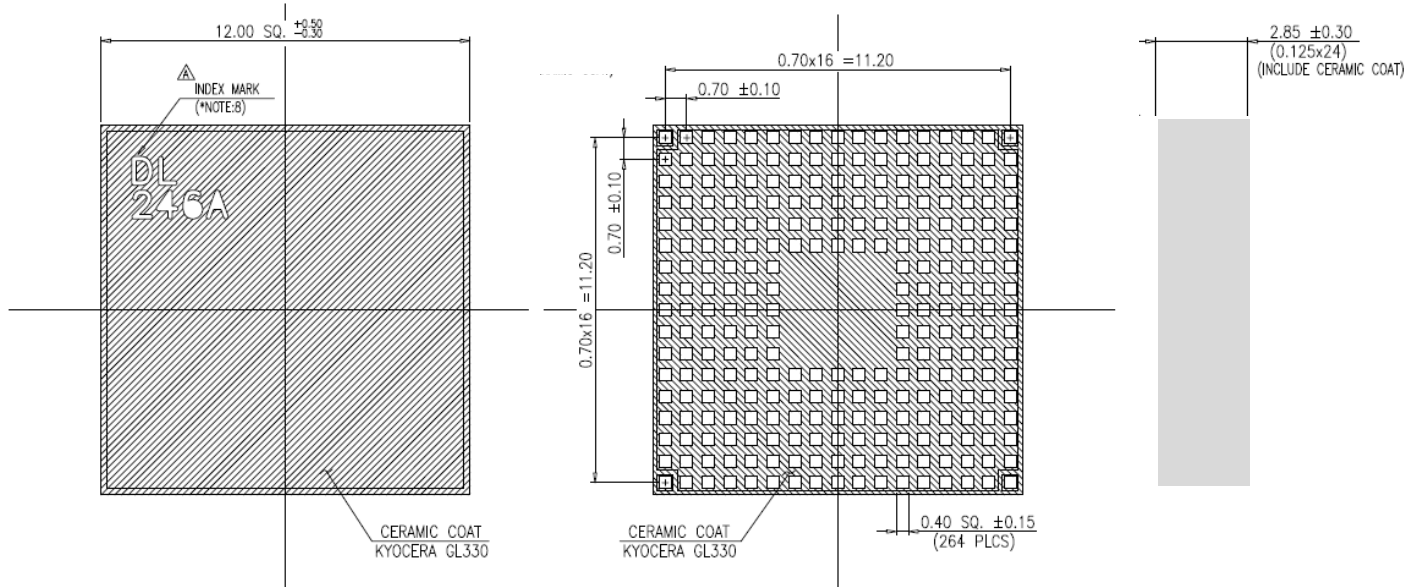


Top View

Available exclusively from Richardson RFPD - 800-737-6937 (U.S. & Canada) - 630-262-6800 (International)  
Or visit [www.richardsonrfpd.com](http://www.richardsonrfpd.com). See important product notice on last page of this document.

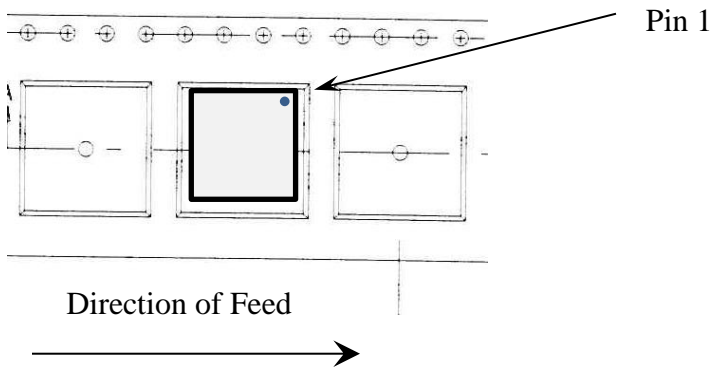
Internal Richardson Document #	Origination Date: March 2, 2015	Rev: V0 Date: March, 2015	Page 2/4
--------------------------------	------------------------------------	------------------------------	----------

## Mechanical Dimensions:



## Tape & Reel Information:

24mm



## Ordering Information

Part Number	DL246A
	DL246ATR

Available exclusively from Richardson RFPD - 800-737-6937 (U.S. & Canada) - 630-262-6800 (International)  
 Or visit [www.richardsonrfpd.com](http://www.richardsonrfpd.com). See important product notice on last page of this document.

Internal Richardson Document #	Origination Date: March 2, 2015	Rev: V0 Date: March, 2015	Page 3/4
--------------------------------	------------------------------------	------------------------------	----------

---

**Richardson RFPD, Inc.**

1950 N. Batavia Ave.  
Suite 100  
Geneva, IL 60134

Telephone: (800) 737-6937  
(630) 262-6800

Internet: [www.richardsonrfpd.com](http://www.richardsonrfpd.com)

**IMPORTANT NOTICE**

RICHARDSON RFPD, INC. AND ITS AFFILIATES RESERVE THE RIGHT TO MAKE CHANGES TO THE PRODUCT(S) OR INFORMATION CONTAINED HEREIN WITHOUT NOTICE. RICHARDSON RFPD, INC. ASSUMES NO RESPONSIBILITY FOR ANY ERRORS WHICH MAY APPEAR IN THIS DOCUMENT.

WARRANTY INFORMATION APPLICABLE TO THE PRODUCT IDENTIFIED HEREIN IS AVAILABLE UPON REQUEST. NOTHING CONTAINED HEREIN SHALL CONSTITUTE A WARRANTY, REPRESENTATION OR GUARANTEE OF ANY KIND. RICHARDSON RFPD, INC. EXPRESSLY DISCLAIMS ALL OTHER WARRANTIES, EXPRESS AND/OR IMPLIED INCLUDING BUT NOT LIMITED TO WARRANTIES OF MERCHANTABILITY, AND OF FITNESS FOR A PARTICULAR PURPOSE, USE OR APPLICATION.

NO PART OF THIS DOCUMENT MAY BE COPIED OR REPRODUCED IN ANY FORM OR BY ANY MEANS WITHOUT THE PRIOR WRITTEN CONSENT OF RICHARDSON RFPD, INC.

**WARNING**

RICHARDSON RFPD, INC. PRODUCTS ARE NOT INTENDED FOR USE IN LIFE SUPPORT APPLIANCES, DEVICES OR SYSTEMS. USE OF A RICHARDSON RFPD, INC. PRODUCT IN ANY SUCH APPLICATION WITHOUT WRITTEN CONSENT IS PROHIBITED.

Available exclusively from Richardson RFPD - 800-737-6937 (U.S. & Canada) - 630-262-6800 (International)  
Or visit [www.richardsonrfpd.com](http://www.richardsonrfpd.com). **See important product notice on last page of this document.**

Internal Richardson Document #	Origination Date: March 2, 2015	Rev: V0 Date: March, 2015	Page 4/4
--------------------------------	------------------------------------	------------------------------	----------