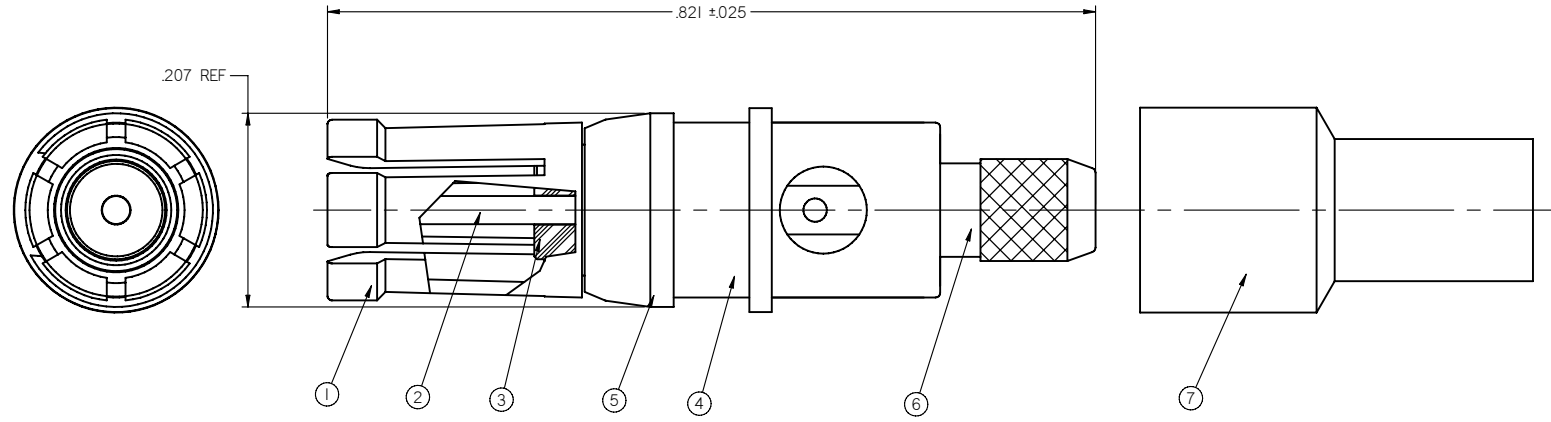


PART NUMBER	ITEM ① OUTER CONTACT	ITEM ② CONTACT	ITEM ③ INSULATOR	ITEM ④ BODY	ITEM ⑤ RETENTION CLIP	ITEM ⑥ FERRULE	ITEM ⑦ SLEEVE
130-0403-001	BERYLLIUM COPPER GOLD PL .00003MIN OVER NICKEL PL .00005MIN OVER COPPER PL .00005MIN	BERYLLIUM COPPER GOLD PL .00005MIN OVER NICKEL PL .00005MIN OVER COPPER PL .00005MIN	TEFLON	BRASS GOLD PL .00001MIN OVER NICKEL PL .00005MIN OVER COPPER PL .00005MIN	BERYLLIUM COPPER GOLD PL .00005MIN OVER NICKEL PL .00005MIN	BRASS GOLD PL .00001MIN OVER NICKEL PL .00005MIN OVER COPPER PL .00005MIN	BRASS GOLD PL .00001MIN OVER NICKEL PL .00005MIN OVER COPPER PL .00005MIN

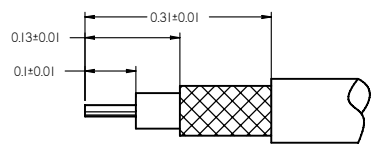
DRAWING NO. 130-0403-001	
REVISIONS	
ENGINEERING RELEASE	
1	
12-15-12	W P L M



NOTES:

- 1. SPECIFICATIONS:
 - ELECTRICAL:
 - IMPEDANCE: 50 OHMS
 - FREQUENCY RANGE: 0-2 GHz
 - VSWR: 1.2 MAX, 2GHz
 - DIELECTRIC WITHSTANDING VOLTAGE: 800 VRMS AT SEA LEVEL
 - WORKING VOLTAGE: 275 VRMS AT SEA LEVEL
 - CABLE: RG 174/U
- MECHANICAL:
 - ENGAGEMENT FORCE: 4 LBS MAX
 - CONTACT RETENTION: 4 LBS MIN
 - CABLE RETENTION: 20 LBS MIN AXIAL FORCE
 - DURABILITY: 500 CYCLES MIN
- ENVIRONMENTAL:
 - OPERATING TEMPERATURE: -55 °C TO 125 °C
 - THERMAL SHOCK: -55 °C TO 125 °C PER MIL-STD-1344, METHOD 1003, COND.A
 - MECHANICAL SHOCK: 50G'S PER MIL-STD-1344, METHOD 2004, COND.A
 - SALT SPRAY: 48 HOURS PER MIL-STD-1344, METHOD 1001, COND.B
 - MOISTURE RESISTANCE: 240 HOURS PER MIL-STD-1344, METHOD 1002, COND. II

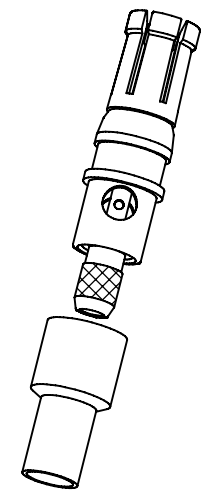
② CABLE ASSEMBLY, FOR CABLE RG 174/U, THE SLEEVE CRIMP DIE HEX: HEX .128 REF.



CABLE STRIP DIMENSIONS



RECOMMENDED HEX CRIMP



CUSTOMER DRAWING
THIS DRAWING TO BE INTERPRETED
PER ANSI Y 14.5M - 1994

COMPANY CONFIDENTIAL

TOLERANCE UNLESS OTHERWISE SPECIFIED	DRAWN BY Monica W	DATE 12-15-12
DECIMALS	CHECKED BY Gary Z	DATE 12-15-12
X.X	APPROVED BY Lin M	DATE 12-15-12
X.XX	U/M	INCH
X.XXX		
ANGLES		

EMERSON Network Power		Connectivity Solutions	
TITLE SOCKET CONTACTS ASSY, STR CABLE TYPE, SIZE 8, RG 174/U-SOLDER CONTACT, 50 OHM			
SHEET 1 OF 1	DRAWING NO. 130-0403-001	SIZE C	

THIS DRAWING WAS PRODUCED BY COMPUTER,
DO NOT SCALE DRAWING OR UPDATE MANUALLY.

D
C
B
A

D
C
B
A