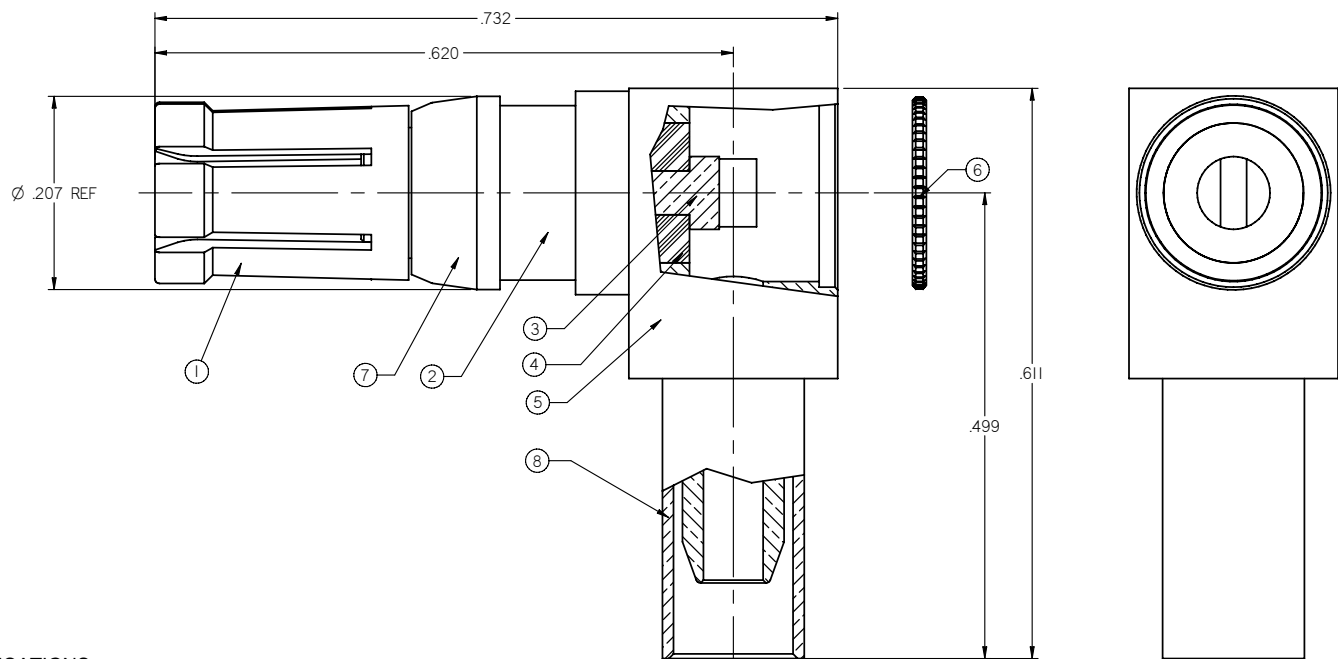


PART NUMBER	ITEM ① OUTER CONTACT	ITEM ② BODY	ITEM ③ CONTACT	ITEM ④ INSULATOR	ITEM ⑤ REAR BODY	ITEM ⑥ END CAP	ITEM ⑦ RETENTION CLIP	ITEM ⑧ SLEEVE
130-0403-101	BERYLLIUM COPPER GOLD PL .00003MIN OVER NICKEL PL .00005MIN OVER COPPER PL .00005MIN	BRASS GOLD PL .00001MIN OVER NICKEL PL .00005MIN OVER COPPER PL .00005MIN	BERYLLIUM COPPER GOLD PL .00005MIN OVER NICKEL PL .00005MIN OVER COPPER PL .00005MIN	TEFLON	BRASS GOLD PL .00001MIN OVER NICKEL PL .00005MIN OVER COPPER PL .00005MIN	BRASS GOLD PL .00001MIN OVER NICKEL PL .00005MIN OVER COPPER PL .00005MIN	BERYLLIUM COPPER NICKEL PL .00005MIN OVER COPPER PL .00005MIN	BRASS GOLD PL .00001MIN OVER NICKEL PL .00005MIN OVER COPPER PL .00005MIN

DRAWING NO. 130-0403-101
REVISIONS
ENGINEERING RELEASE
A
12-13-12 M W G L M



NOTES:

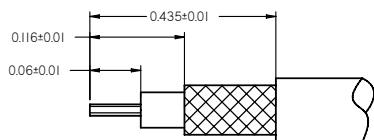
1. SPECIFICATIONS:

ELECTRICAL:
 IMPEDANCE: 50 OHMS
 FREQUENCY RANGE: 0-2 GHz
 VSWR: 1.25 MAX, 2GHz
 DIELECTRIC WITHSTANDING VOLTAGE: 800 VRMS AT SEA LEVEL
 WORKING VOLTAGE: 275 VRMS AT SEA LEVEL
 CABLE: RG 174/U

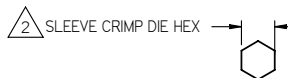
MECHANICAL:
 ENGAGEMENT FORCE: 4 LBS MAX
 CONTACT RETENTION: 4 LBS MIN
 CABLE RETENTION: 20 LBS MIN AXIAL FORCE
 DURABILITY: 500 CYCLES MIN

ENVIRONMENTAL:
 OPERATING TEMPERATURE: -55 °C TO 125 °C
 THERMAL SHOCK: -55 °C TO 125 °C PER MIL-STD-1344, METHOD 1003, COND.A
 MECHANICAL SHOCK: 50G'S PER MIL-STD-1344, METHOD 2004, COND.A
 SALT SPRAY: 48 HOURS PER MIL-STD-1344, METHOD 1001, COND.B
 MOISTURE RESISTANCE: 240 HOURS PER MIL-STD-1344, METHOD 1002, COND. II

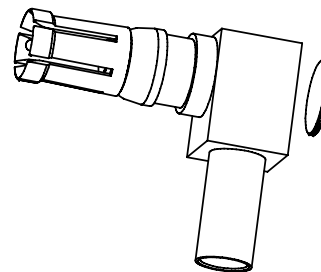
2. CABLE ASSEMBLY, FOR CABLE RG 174/U, THE SLEEVE CRIMP DIE HEX: HEX .128 REF.



CABLE STRIP DIMENSIONS



RECOMMENDED HEX CRIMP



CUSTOMER DRAWING

THIS DRAWING TO BE INTERPRETED PER ANSI Y 14.5M - 1994

COMPANY CONFIDENTIAL

TOLERANCE UNLESS OTHERWISE SPECIFIED	DRAWN BY Monica W	DATE 12-13-12
DECIMALS INCH	CHECKED BY Gary Z	DATE 12-13-12
X.XX	APPROVED BY Lin M	DATE 12-13-12
X.XXX	U/M INCH	
ANGLES + 0.5°		

EMERSON Network Power	Connectivity Solutions
TITLE SOCKET CONTACTS ASSY, RA CABLE TYPE, SIZE 8, RG 174/U,50 OHM	
SHEET 1 OF 1	DRAWING NO. 130-0403-101
SIZE C	

THIS DRAWING WAS PRODUCED BY COMPUTER, DO NOT SCALE DRAWING OR UPDATE MANUALLY.