

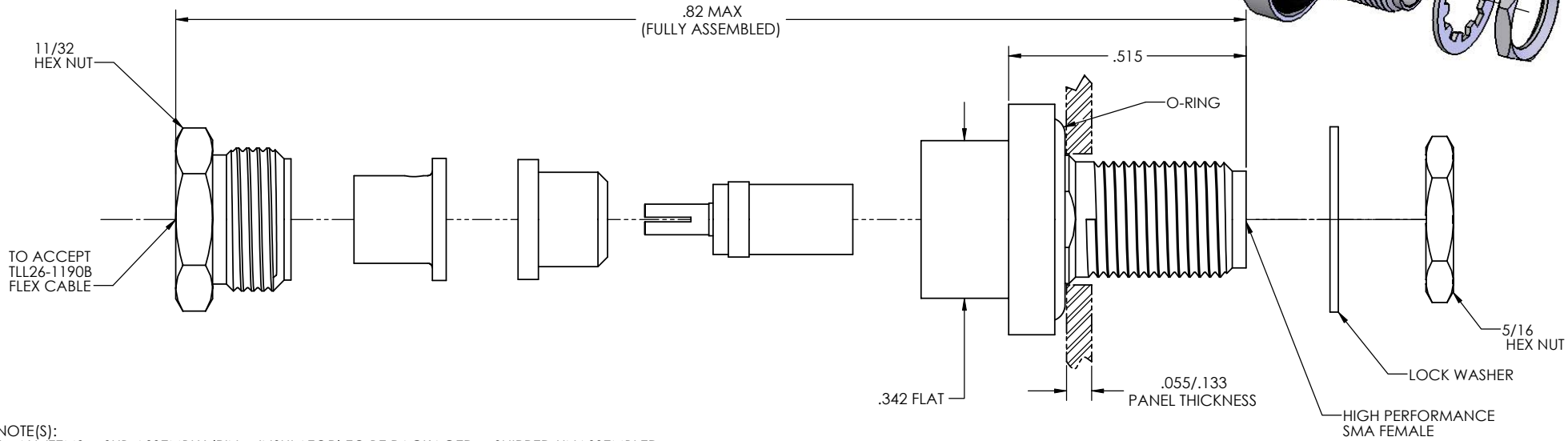
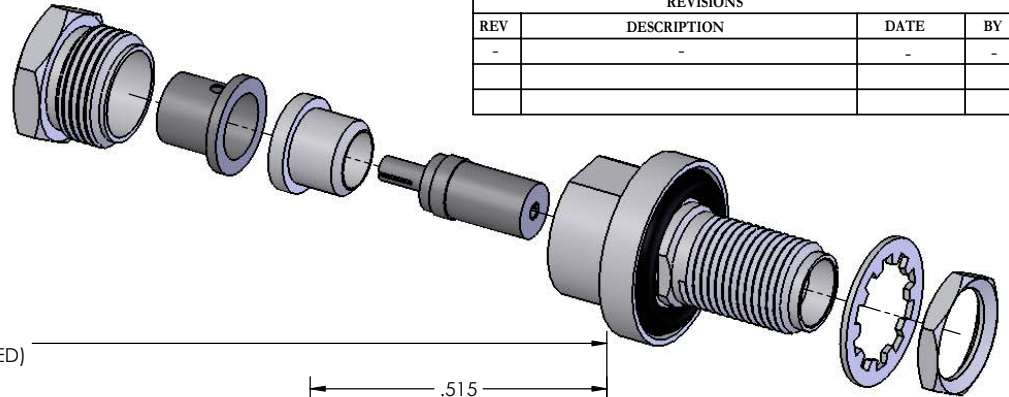
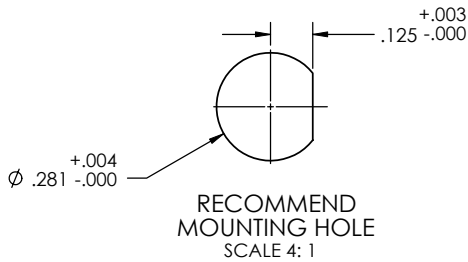
4

3

2

1

REVISIONS			
REV	DESCRIPTION	DATE	BY
-	-	-	-



NOTE(S):  
 1. ALL ITEMS & SUB-ASSEMBLY (PIN & INSULATOR) TO BE PACKAGED & SHIPPED UNASSEMBLED.

MATERIAL:	ELECTRICAL:	MECHANICAL:	ENVIRONMENTAL:
BODY, RETAINING BOLT, LOCK NUT, SPACER: 303 SST PER ASTM A-582 CENTER CONDUCTOR, SOLDER SLEEVE: BeCu ALLOY PER ASTM B-196 INSULATOR: TEFLON PER ASTM D-1710 O-RING: SILICONE RUBBER LOCK WASHER: 410 SST	Impedance: 50 Ohms Nom. Freq. Range: DC TO 26 GHz VSWR: 1.05 +.005 $\sqrt{f}$ GHz Insertion Loss: 0.03 * $\sqrt{f}$ GHz Working Voltage: 500 Vrms @ Sea Level Dielectric Withstand Voltage: 1500 Vrms RF HiPot Voltage: 1000 Vrms Min @ 5MHz Corona Level: 375 Vrms @ 70,000 ft Insulation Resistance: 5000 Mohms Contact Resistance: Center Conductor: 2.0 Milliohms	Force To Engage & Disengage: Torque: 2 inch-pounds max Longitudinal Force: NA Connector Durability: 500 cycles min @ 12 cycles/minute max Center Contact Retention: 4 lbs min. axial Permeability: Less than 2.0 mU	Temp. Range: -65°C to +165°C Thermal Shock: MIL-STD-202, Method 107, Test Cond. B Moisture Resistance: MIL-STD-202, Method 106. Insulation resistance at least 200 MegaOhms within 5 minutes after removal from humidity Corrosion: MIL-STD-202, Method 101, Test Cond. B Vibration: MIL-STD-202, Method 204, Test Cond. D Shock: MIL-STD-202, Method 213, Test Cond. I

FINISH:	APPLICABLE CARLISLE IT DOCUMENTS	TOLERANCES AND NOTES	MATERIAL	SIZE	SPECIFICATION	PROCUREMENT										
SOLDER SLEEVE, CENTER CONDUCTOR: GOLD PLATE PER ASTM B-488 OVER NICKEL PLATE PER AMS-QQ-N-290 BODY, RETAINING BOLT, HEX NUT, LOCK WASHER, SPACER: PASSIVATED PER ASTM A-967 OR AMS-QQ-P-35	<table border="1"> <thead> <tr> <th>WORK STANDARD</th> <th>PROD INSTRUC</th> <th>ASSY INSTRUC</th> </tr> </thead> <tbody> <tr> <td>NA</td> <td>NA</td> <td>NA</td> </tr> </tbody> </table>	WORK STANDARD	PROD INSTRUC	ASSY INSTRUC	NA	NA	NA	EXCEPT AS NOTED DIMENSIONS ARE IN INCHES. LINEAR $XX \pm .015$ ANGULAR $\pm 1/2^\circ$ FRACTION $\pm 1/32$ 1. MACHINE FINISH: $\sqrt{RMS}$ 2. BREAK ALL SHARP EDGES .003 MAX. 3. MACHINED FILLETS .005 MAX. 4. MACHINED SURFACES SQUARE TO RESPECTIVE AXIS WITHIN .005 INCHES PER INCH. 5. MACHINED DIAMETERS CONCENTRIC WITHIN .002 TLR. 6. DIMENSIONS TO BE MET BEFORE PLATING. 7. CHAMFER ALL THREADS 45°. 8. THREADS PER H-28 9. REMOVE FRAYED EDGES ON TEFLON. 10. REMOVE ALL BURRS.	<table border="1"> <thead> <tr> <th>APPROVAL INITIALS</th> <th>DATE</th> </tr> </thead> <tbody> <tr> <td>YPHAN</td> <td>04.16.08</td> </tr> </tbody> </table>	APPROVAL INITIALS	DATE	YPHAN	04.16.08	6:1	<b>CARLISLE</b> Interconnect Technologies Long Beach, CA 90815 TITLE: HIGH PERFORMANCE SMA FEMALE FOR TLL26-1190B FLEX CABLE	SHEET 1 OF 1 REV. -
WORK STANDARD	PROD INSTRUC	ASSY INSTRUC														
NA	NA	NA														
APPROVAL INITIALS	DATE															
YPHAN	04.16.08															
CAGE CODE: 30990 DRAWING NO: 5754-7CCSF																

4

3

2

1