

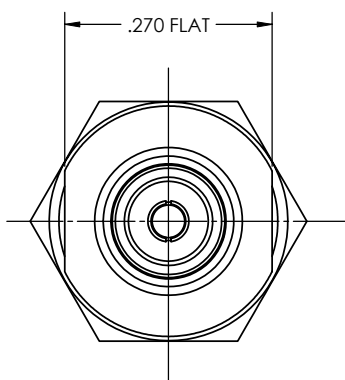
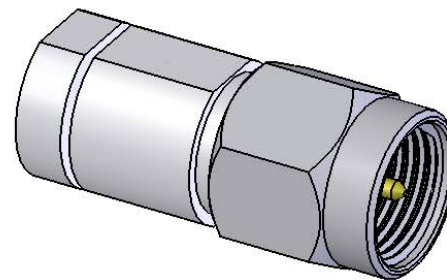
4

3

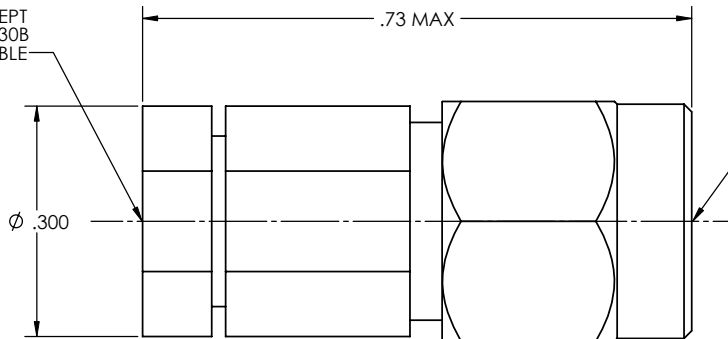
2

1

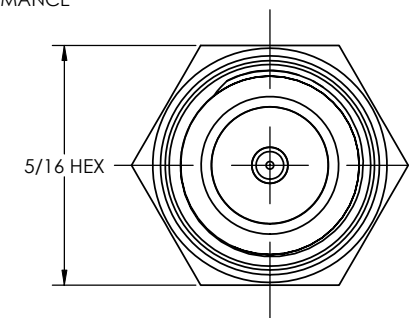
REVISIONS			
REV	DESCRIPTION	DATE	BY
A	ECO 21293	05.30.08	YP



TO ACCEPT
TLL40-1130B
FLEX CABLE



HIGH PERFORMANCE
SMA MALE



NOTE(S):

- SOLDER SLEEVE AND RETAINING BOLT TO BE SHIPPED UNASSEMBLE.

MATERIAL:
 BODY, NUT, RETAINING BOLT:
 303 SST PER ASTM A-582
 CENTER CONDUCTOR, SOLDER SLEEVE &
 RETAINING BOLT:
 BeCu ALLOY PER ASTM B-196
 INSULATOR:
 TEFLON
 CABLE INSERT:
 BRASS ALLOY PER ASTM B-16

ELECTRICAL:
 Impedance: 50 Ohms Nom.
 Freq. Range: DC TO 26 GHz
 VSWR: 1.15 Max
 Insertion Loss: .20 dB Max
 Working Voltage: 165 Vrms @ Sea Level
 Dielectric Withstand Voltage: 500 Vrms
 RF HiPot Voltage: 250 Vrms Min @ 5MHz
 Corona Level: 125 Vrms @ 70,000 ft
 Insulation Resistance: 5000 Mohms
 Contact Resistance:
 Center Conductor: 2.0 Milliohms

MECHANICAL:
 Mating Characteristics:
 High performance SMA Male
 Force To Engage & Disengage:
 Torque: 2 inch-pounds max
 Longitudinal Force: NA
 Connector Durability:
 500 cycles min @ 12 cycles/minute max
 Coupling Proof Torque: 15 inch-pounds min.
 Coupling Mech. Retention: 60 pounds min.

ENVIRONMENTAL:
 Temp. Range: -65°C to +165°C
 Thermal Shock:
 MIL-STD-202, Method 107, Test Cond. B
 Moisture Resistance:
 MIL-STD-202, Method 106. Insulation resistance
 at least 200 MegaOhms within 5 minutes after
 removal from humidity
 Corrosion:
 MIL-STD-202, Method 101, Test Cond. B
 Vibration:
 MIL-STD-202, Method 204, Test Cond. D
 Shock:
 MIL-STD-202, Method 213, Test Cond. I

FINISH:
 CENTER CONDUCTOR; SOLDER SLEEVE
 GOLD PLATE PER ASTM B-488 OVER NICKEL PLATE PER AMS-QQ-N-290
 BODY, NUT, RETAINING BOLT:
 PASSIVATED PER ASTM A-967 OR AMS-QQ-P-35

APPLICABLE TENSOLITE DOCUMENTS		
WORK STANDARD	PROD INSTRUC	ASSY INSTRUC
NA	NA	AI 627

NOTICE
 THIS DRAWING EMBODIES A CONFIDENTIAL PROPRIETARY DESIGN ORIGINATED BY TENSOLITE COMPANY AND ALL DESIGN, MANUFACTURING, REPRODUCTION, USE AND SALE RIGHTS REGARDING THE SAME ARE EXPRESSLY RESERVED. IT IS SUBMITTED UNDER A CONFIDENTIAL RELATIONSHIP FOR A SPECIFIED PURPOSE AND THE RECIPIENT AGREES BY ACCEPTING THIS DRAWING NOT TO SUPPLY OR DISCLOSE ANY INFORMATION REGARDING IT TO ANY UNAUTHORIZED PERSON TO INCORPORATE IN OTHER PROJECTS. ANY SPECIAL FEATURES PEGULAR TO THIS DESIGN, ALL PATENT RIGHTS HERETO ARE EXPRESSLY RESERVED BY TENSOLITE COMPANY, LONG BEACH, CALIFORNIA 90815.

- TOLERANCES AND NOTES EXCEPT AS NOTED**
 DIMENSIONS ARE IN INCHES.
 LINEAR .XX ±.015
 XX ±.005 ANGULAR ±1/2°
 FRACTION ±1/32
- MACHINE FINISH \sqrt{R} RMS
 - BREAK ALL SHARP EDGES .005 MAX.
 - MACHINED FILLETS .005 MAX.
 - MACHINED SURFACES SQUARE TO RESPECTIVE AXIS WITHIN .005 INCHES PER INCH.
 - MACHINED DIAMETERS CONCENTRIC WITHIN .002 I.R.
 - DIMENSIONS TO BE MET BEFORE PLATING.
 - CHAMFER ALL THREADS 45°.
 - THREADS PER #129.
 - REMOVE FRAYED EDGES ON TEFLON.
 - REMOVE ALL BURRS.

APPROVAL INITIALS	DATE
DRAWN BY YPHAN	05.30.08
CHECKED BY -	-
TEST ENGR	
DESIGN ENGR TEN	06.12.08
MFG. ENGR	

MATERIAL	SIZE	SPECIFICATION	PROCUREMENT
Tensolite 2400 Grand Avenue Long Beach, California 90815-1702		HIGH PERFORMANCE CABLES & INTERCONNECT SYSTEMS	
TITLE HIGH PERFORMANCE SMA MALE FOR TLL40-1130B			
SCALE 1:1	SUB-DIRECTORY/FILE NAME SW/	SHEET 1 OF 1	
SIZE C	CAGE CODE 30990	DRAWING NO. OL 5755-6CCSF	REV. A

4

3

2

1