

# DC BLOCKS

2.9mm, 10 MHz - 40 GHz, 200 Volts

## SPECIFICATIONS:

Models: 8143A and 8146A

**RoHS**  
Compliant

**AEROFLEX**  
A passion for performance.

### Electrical:

Frequency Range \_\_\_\_\_ 10 MHz - 40 GHz  
VSWR \_\_\_\_\_ 1.45:1 Max.  
Impedance \_\_\_\_\_ 50 Ohms  
Insertion Loss \_\_\_\_\_ 0.75 dB Max.  
Voltage Rating \_\_\_\_\_ 200 Volts Max.  
Operating Temp. Range \_\_\_\_\_ -65°C to +125°C

### Mechanical:

Connectors \_\_\_\_\_ Passivated Stainless Steel

Mates both Mechanically and Electrically with  
SMA, K\* and 3.5mm Series Connectors

\_\_\_\_\_ Gold Plated Beryllium Copper

### Housings:

Inner Only Blocks \_\_\_\_\_ Passivated Stainless Steel

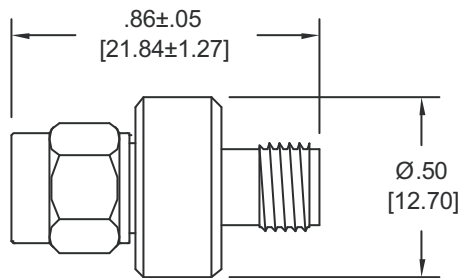
Inner/Outer Blocks \_\_\_\_\_ High Temperature Plastic

\* K is a Trademark of Anritsu Corp.

Model Number: **8143A**

2.9mm Male to Female; Inner/Outer

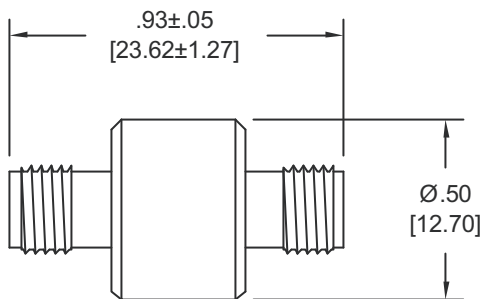
Weight \_\_\_\_\_ 5.5 Grams Max.



Model Number: **8146A**

2.9mm Female to Female; Inner/Outer

Weight \_\_\_\_\_ 6.2 Grams Max.



Note: Dimensions in Brackets are Expressed in Millimeters and are for Reference Only.  
Design, specifications are subject to change without notice. Contact factory for technical specifications before purchasing and/or use.

8143A: REV -

**AEROFLEX**  
INMET

Aeroflex / Inmet, Inc. • 300 Dino Drive, Ann Arbor, MI 48103 • U.S.A.  
888-244-6638 or 734-426-5553 • FAX: 734-426-5557  
www.aeroflex-inmet.com • inmet-sales@eroflex.com