

# DC BLOCKING TERMINATION

SMPM, 100 kHz - 50 GHz, 1/2 Watt

## SPECIFICATIONS:

Models: 8541-MPF

**RoHS**  
Compliant

**AEROFLEX**  
A passion for performance.

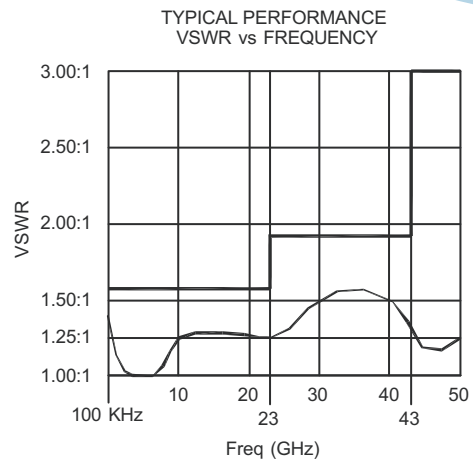
### Electrical:

Frequency Range \_\_\_\_\_ 100 KHz - 50 GHz  
 VSWR  
 100 KHz - 23 GHz \_\_\_\_\_ 1.57:1 Max. (-13dB Return Loss)  
 23 - 43 GHz \_\_\_\_\_ 1.92:1 Max. (-10dB Return Loss)  
 43 - 50 GHz \_\_\_\_\_ 3.00:1 Max. (-6dB Return Loss)  
 Input Power \_\_\_\_\_ 1/2 Watt Avg.  
 Impedance \_\_\_\_\_ 50 Ohms  
 Voltage Rating \_\_\_\_\_ 10 Volts Max DC  
 Operating Temp. Range \_\_\_\_\_ -65°C to +125°C

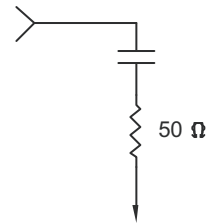
### Mechanical:

SMPM Connectors \_\_\_\_\_ Gold Plated Beryllium Copper  
 Mates with MILSTD-348 & GPPO™ Connectors  
 Conductors \_\_\_\_\_ Gold Plated Beryllium Copper  
 Housing \_\_\_\_\_ Gold Plated Beryllium Copper

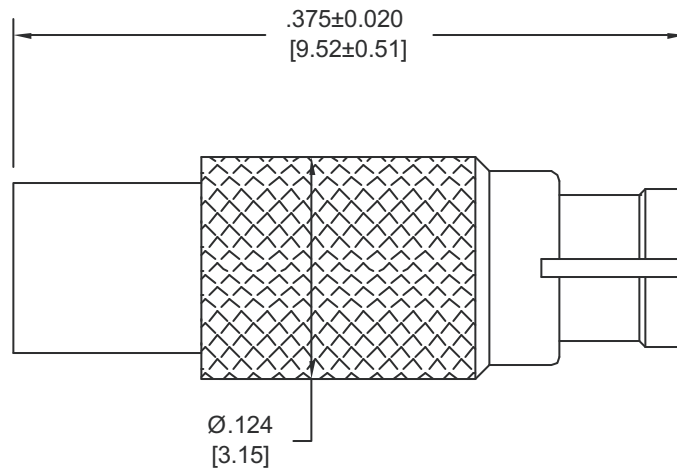
\*GPPO is a trademark of Corning Gilbert Inc.



Model Number: **8541-MPF**



SCHEMATIC DIAGRAM



Note: Dimensions in Brackets are Expressed in Millimeters and are for Reference Only.

8541: REV -

**AEROFLEX**  
INMET

Aeroflex / Inmet, Inc. • 300 Dino Drive, Ann Arbor, MI 48103 • U.S.A.  
 888-244-6638 or 734-426-5553 • FAX: 734-426-5557  
 www.aeroflex-inmet.com • inmet-sales@aeroflex.com