

# PRODUCT DATA DRAWING

REVISION HISTORY			
REV	DESCRIPTION	DATE	APPROVED
-	DCN 30327	09/03	DWC
A	DCN 31895	02/05	CCC
B	DCN 38049	03/11	NHR

**MATERIAL:**

BODY,  
CAP,  
SLEEVE &  
COUPLING NUT: STAINLESS STEEL PER AMS-5640,  
ALLOY UNS S30300, TYPE 1

LOCK RING: BERYLLIUM COPPER PER ASTM B196,  
ALLOY No. UNS C17300, TD04

SLEEVE (CHIP) &  
CONTACTS: BRASS PER ASTM B16, ALLOY UNS No. C36000

BELLOWS SPRING: ELECTRO DEPOSITED NICKEL: GOLD PLATED

INSULATOR: KEL-F PER ASTM D1430

GASKET: SILICONE RUBBER PER A-A-59588,  
CLASS 2B, GRADE 50/60

RESISTOR ELEMENT: ALUMINUM NITRIDE SUBSTRATE WITH  
TANTALUM NITRIDE RESISTOR: GOLD PLATED  
TERMINATIONS

**FINISH:**

BODY,  
CAP,  
COUPLING NUT &  
SLEEVE (BODY): PASSIVATED PER AMS-2700, TYPE II.

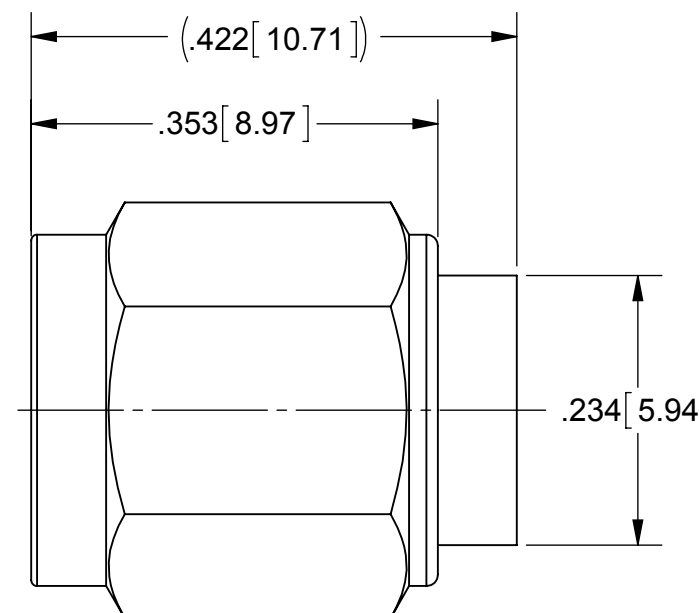
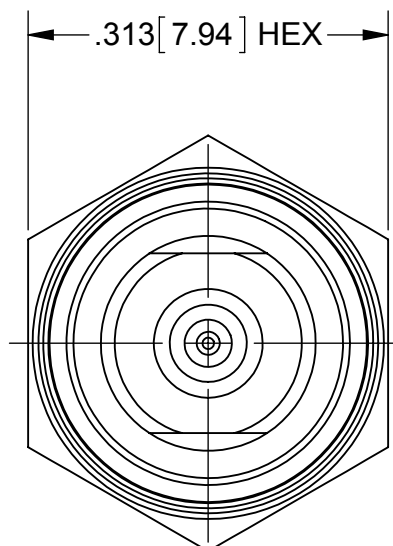
CONTACTS: GOLD PER ASTM B488, TYPE I,  
CODE C, CLASS .5, OVER NICKEL  
PER AMS-QQ-N-290, CLASS 1, .00005" MIN.

SLEEVE (CHIP): GOLD PER ASTM B488, TYPE II, CODE C,  
CLASS 1.52, OVER NICKEL PER AMS-QQ-N-290,  
CLASS 1, .00010" MIN

**PERFORMANCE:**

IMPEDANCE: 50 OHMS  
FREQ. RANGE: DC TO 50.0 GHz  
VSWR: 1.30:1 DC TO 50.0 GHz  
OPERATING TEMP.: -65°C TO +125°C  
AVG. POWER: 1 WATT (POWER INPUT DERATED LINEARLY  
FROM 25°C TO 10% OF AVERAGE AT 125°C)  
PEAK POWER: 100 WATTS (PEAK POWER FOR A DUTY CYCLE  
OF 5X10<sup>-4</sup> MAXIMUM PULSE DURATION OF  
5 MICROSECONDS)

ENGAGEMENT/  
DISENGAGEMENT: 2 IN-LBS



MATERIAL: SEE NOTES	DIMENSIONS ARE IN INCHES TOLERANCES: FRACTIONAL: ±1/64 ANGULAR: X° ±1'0" X°X' ±15'	UNLESS OTHERWISE SPECIFIED 1) ALL DIMENSIONS ARE IN INCHES (MILLIMETERS) 2) ALL DIMENSIONS ARE AFTER PLATING. 3) BREAK CORNERS & EDGES .005 R. MAX. 4) CHAM. 1ST & LAST THREADS. 5) SURFACE ROUGHNESS 63-MIL-STD-10. 6) DIA: 'S ON COMMON CENTERS TO BE CONCENTRIC WITHIN .005 T.I.R. 7) REMOVE ALL BURRS	<b>SV Microwave, Inc.</b> 2400 Centrepark West Drive, Suite 100 West Palm Beach, FL 33409 TITLE: <b>2.4mm, 50 OHM PLUG                  TERMINATION DC TO 50 GHz</b>
FINISH: SEE NOTES	DECIMAL: X ±.030 .XX ±.010 .XXX ±.005	INTERPRET DIMENSIONS AND TOLERANCES PER ASME Y14.5M - 1994	
SURFACE AREA: N/A	THIRD ANGLE PROJECTION	DRAWN: EFT 03/02/11	SIZE: B CAGE CODE: 95077 DWG. NO. SF8016-6304
PROPRIETARY THE INFORMATION CONTAINED IN THIS DRAWING IS THE SOLE PROPERTY OF SV MICROWAVE, INC. ANY REPRODUCTION IN PART OR AS A WHOLE WITHOUT THE WRITTEN PERMISSION OF SV MICROWAVE, INC IS PROHIBITED.		CHECKED: NHR 03/02/11	SCALE: 6:1
		APPROVED: NHR 03/02/11	SHEET 1 OF 1